



UNIVERSITAS AIRLANGGA



KYUSHU
UNIVERSITY

SCIENTIFIC MEETING in TELEMEDICINE

SUPPORTED by TEMDEC



HENDRIK SB

FACULTY OF DENTAL MEDICINE

AIRLANGGA UNIVERSITY

TEMDEC
Telemedicine Development Center of Asia

Telemedicine Development Center of Asia

1. AIRLANGGA UNIVERSITY and NETWORK



- 5 TOP UNIVERSITIES in INDONESIA
- DENTAL MEDICINE is ELDEST in INDONESIA
- AIRLANGGA HAVE 4 HOSPITAL :
 - DENTAL HOSPITAL
 - HOSPITAL of AIRLANGGA UNIVERSITY
 - INFECTION HOSPITAL
 - VETENIRER HOSPITAL
- RESEARCH CENTER (ITD & BSL-3)



FACULTY of DENTAL MEDICINE



DENTAL HOSPITAL



8 SPECIALISTIC in HOSPITAL CARE
and TREATMENT

ORAL SURGERY ROOM



OTHERS HOSPITAL and LAB. RESEARCH AIRLANGGA UNIV.



General and specialistic service
of Airlangga University Hospital



Infectious Hospital Airlangga Univ



Institute of Tropical Disease
Airlangga and Japan Collaborative

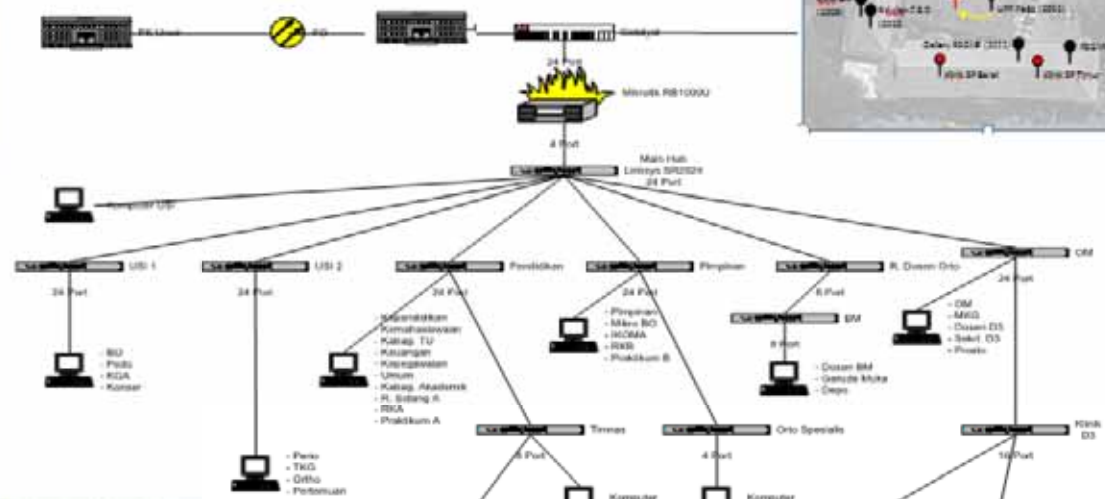
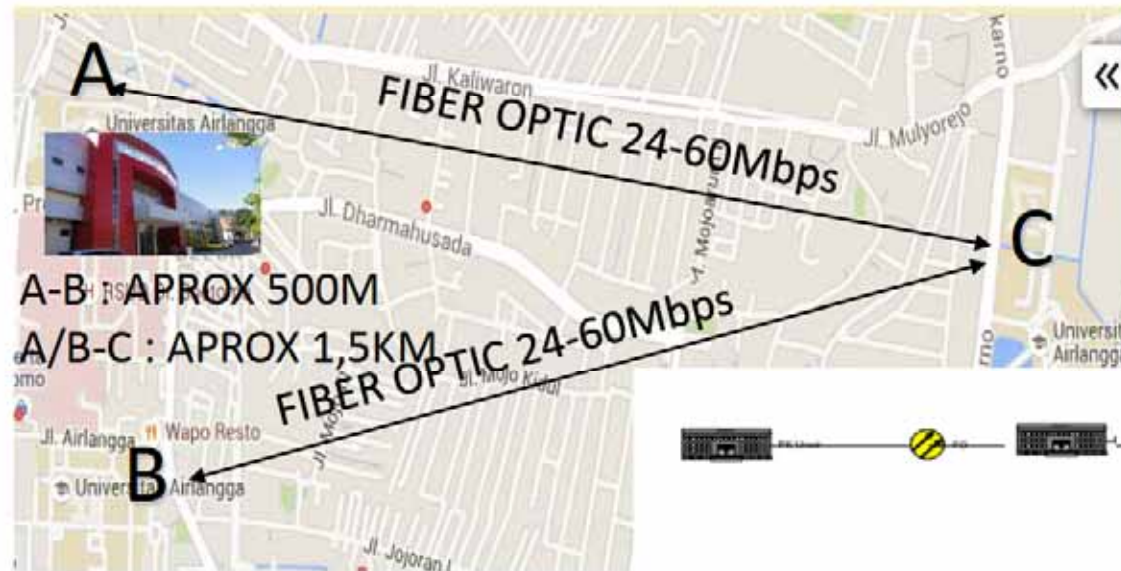


Asia-Japan Collaborative Research for Emerging & Reemerging Infectious Disease.



Avian Vaccine

UNIVERSITY – NETWORK MAPS



TELECONFERENCE in FACULTY

DENTAL FACULTY
HIROSHIMA UNIV



Skype



Polycom

SHARE LECTURE



SHARE LECTURE by TELECONFERENCE

Topic	Department	Lecturer
Characteristic of bone around implant under loading	Advance Prosthodontic	Katsunori Koretake
S. aureus vs P. aeruginose	Bacteriology	Shizuo Kayama
Radiation and biological response	Oral and maxillofacial radiology	Masahiko Sawajiri
Translation researches on development of novel diagnostic and therapeutic methods for periodontal diseases	Oral and maxillofacial pathobiology	Takashi Takata
Development of novel therapy for periodontal tissue regeneration	Periodontal medicine	Hidemi Kurihara
Study of behaviour management in pediatric dental treatment	Pediatric dentistry	Chieko Mitsuata
Three dimensional analyses for diagnosis of occlusion and dentition in children	Pediatric dentistry	Yasutaka Kaihara
Relationship between inflammatory dental disease and systemic health condition	Oral and maxillofacial pathobiology	Mutsuyumi Miyauchi
Photodynamic therapy of oral cancer	Molecular Oral Medicine& Maxillo facial surgery	Shigeaki Toratani

TELEMEDICINE in FACULTY

APAN - TEMDEC
KYUSHU UNIV. HOSPITAL



HOW TO USE VIDYO ??

VidyoDesktop™ - Faculty of Dental Medicine UNAIR 2 - vidyo-portal.med.kyushu-u.ac.jp

dental

- + Faculty of Dental Medicine UNAIR 1
- + Faculty of Dental Medicine UNAIR 2
- + Kyushu Dental University
- + Tokyo Medical and Dental University
- + Tokyo Medical Dental University
- + Tokyo Medical Dental University-Dent

VidyoDesktop™ - Faculty of Dental Medicine UNAIR 2 - vidyo-portal.med.kyushu-u.ac.jp

dental

- + Faculty of Dental Medicine UNAIR 1
- + Faculty of Dental Medicine UNAIR 2
- + Kyushu Dental University
- + Tokyo Medical and Dental University
- + Tokyo Medical Dental University
- + Tokyo Medical Dental University-Dent

Faculty of Dental Medicine...

Status: Available
Extension: 20150206
Tenant: Default

Connect to Faculty of Dental Medicine UNAIR 1's Room

Connect with Faculty of Dental Medicine UNAIR 1 Directly

Share screen upon connection

TELECONFERENCE ROOM



Dean Meeting Room



Big Class Room



CBT Room

2. ONE-MONTH TRAINING PROGRAM on TEMDEC

- MY PURPOSE :
 1. BENCHMARKING TELEMEDICINE SYSTEM
 2. PREPARING THE TELEMEDICINE FOR GOOD QUALITY
 3. THE TROUBLESHOOTING IN TELEMEDICINE
 4. SUSTAINABILITY THIS SYSTEM FOR TEACHING,
LEARNING AND WEBMINAR

TEMDEC STAFF



Shuji Shimizu, MD, PhD
Director



Naoki Nakashima, MD, PhD
Vice Director



Yasuaki Antoku, PhD



Kuriko Kudo, PhD



Yoshiko Houkabe



Shunta Tomimatsu



Shoji Hirano



Ryoko Yoshida



Yui Hamazaki



Chiharu Kodama

BENCHMARKING in TEMDEC

- TELECONFERENCE SYSTEM :
 - DVTS (older)
 - H.323 (polycom, sony and others)
 - VIDYO (ROOM and DEKSTOP)

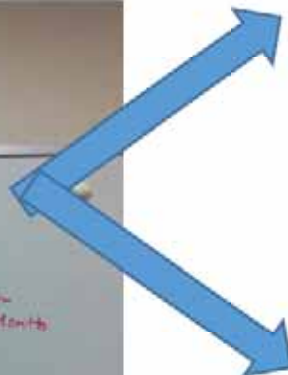
- THE DEVICE FACILITIES :
 - MCU
 - VIDYO GATEWAY
 - VIDYO PORTAL
 - VIDYO REPLAY
 - VIDYO ROOM
 - H.323

DEVICE TRAINING of DVTS SYSTEM

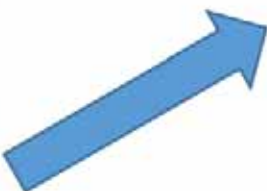
DVTS SEND -RECEIVE



DEVICE TRAINING of H.323 and VIDYO SYSTEM



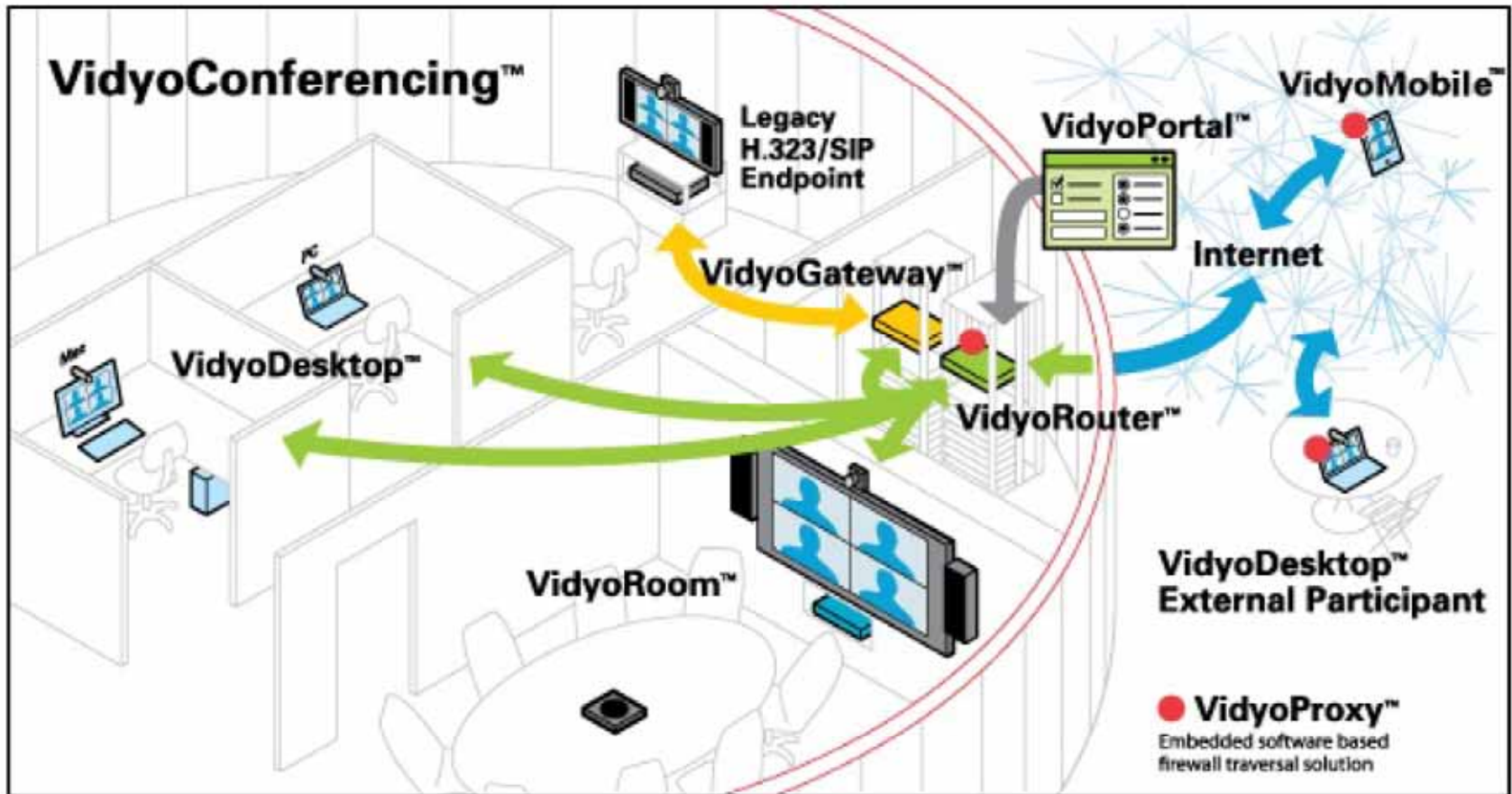
DEVICE TRAINING



ENDOSCOPY DEVICE



H.323 – VIDYO SYSTEM



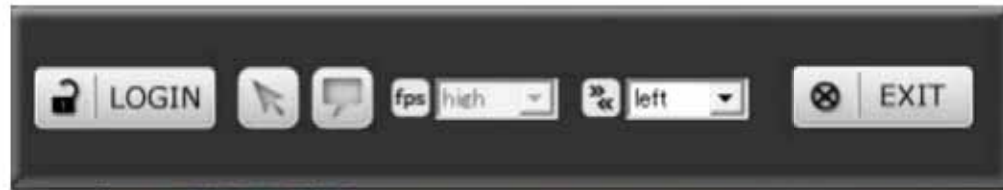
MCU SETTING (MULTIPOINT CONTROL UNIT)

The screenshot displays the RMX Manager interface with the following components:

- Title Bar:** RMX Manager EMA-V8.5.3.182241 - MCU selected: latihan temdec(133.5.230.36)
- Header:** Polycom | RMX Manager
- Left Panel:** Conferences (3) list with columns: MCU, Display Name, Status.
 - latihan temdec | DefaultEQ(183)
 - latihan temdec | MIC meeting | Empty
 - latihan temdec | TEHDEC
- Center Panel:** Participants (EP:2 L:0 T:2) table.

MCU	Name	Status	Role	IP Address
latihan temdec	Temdec	Connected		133.5.2
latihan temdec	Tomimatsu@t	Connected		133.5.2
- Right Panel:** Address Book and Hierarchy (Main).
- Settings Window:** General settings for the selected MCU.
 - Display Name: TEHDEC
 - Duration: 30 : 00
 - Conferencing Mode: CP (Continuous Presence)
 - Telepresence Layout managed by MCU:
 - Presentation Mode:
 - Scene Layout:
 - Lecture: [None]
 - Auto Scan Interval(s): 10
 - Auto Layout:

TELE-POINTER SOFTWARE



POINTER PARTICIPANTS ARE DIFFERENT



CLASS ROOM DEVICE



SOME CLASS READY FOR
TELEMEDICINE

APAN SESSION

Doctors: Make attractive programs

- Surgery/Endoscopy
- Cardiac intervention
- Rehabilitation
- Dental
- Bird flu, SARS, HIV
- Basic Science
- Nursing
- Medical students, etc.

A lot more needs...



1. TOPIC
2. WHEN
3. WHO/PARTICIP
4. CP
5. ENGINEER

IMPORTANT THING !!

TEST PREPARATION :

1ST TEST :

TO CHECK SOUND/ VIDEO/ PRESENTATION/
NETWORK OF EACH PARTICIPANTS

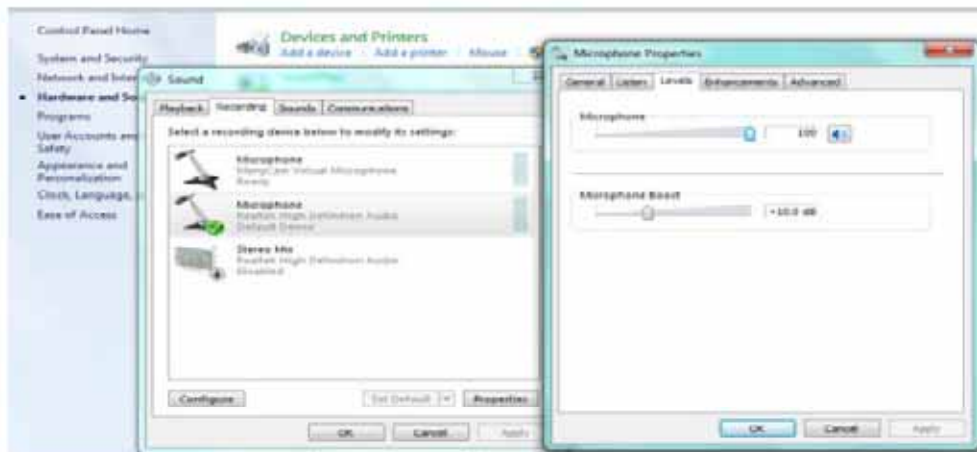
2ND TEST :

CONNECTION TEST TO VENUE.

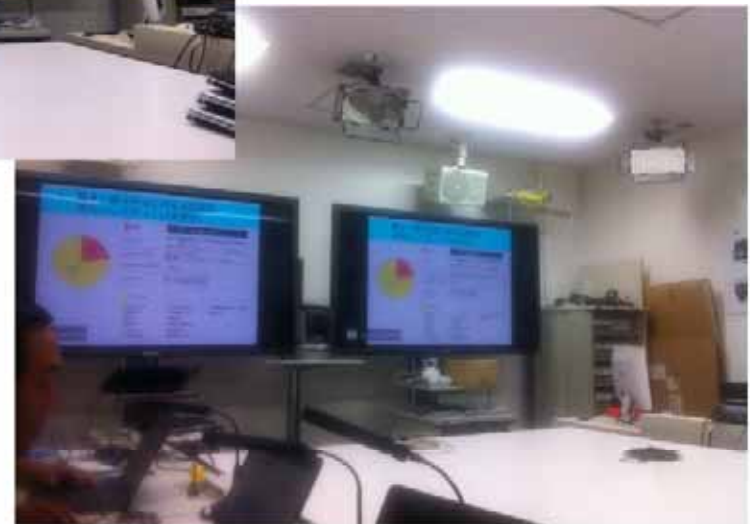
3RD TEST :

FINAL TEST JUST BEFORE THE TELEMEDICINE

TEST PREPARATION



TEST PREPARATION



PARTICIPANTS

University of Adelaide (UA)-----Not Joined

Changi General Hospital (CGH)-----OK

Deenanath Mangeshkar Hospital (DMH)-Audio not good (need to ipmrove until next test)

Singapore General Hospital (SGH)-----Content receiving not good (need to ipmrove until next test)

Nagoya University (NU)-----OK

National Cancer Center (NCC)-----OK

Konkuk University (KKU)-----Video not good (need to ipmrove until next test)

Baldota Institute of Digestive Science (BIDS)-Not Joined

Metropolitan Hospital (MH)-----Not Joined

Oslo University Hopsital (OUH)-----OK

Cho Ray Hospital (CRH)-----Need to test at venue next time

Institute of Liver and Biliary Sciences (ILBS)-Not Joined

Tan Tock Seng Hospital (TTSH)-----Not Joined

Asian Institute of Gastroenterology (AIG)-Not Joined

Kinki University-----OK

APAN39-DENTAL SESSION



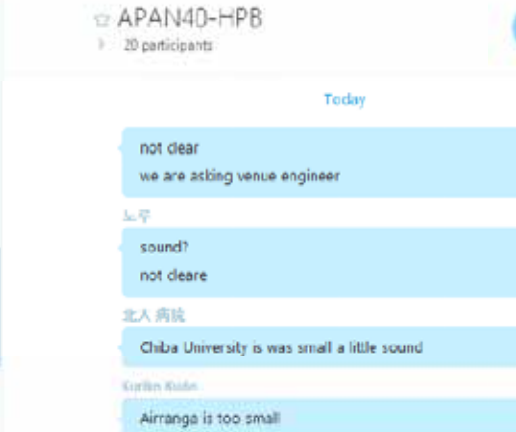
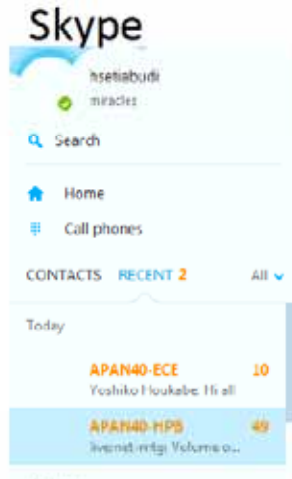
TEMDEC FULL SUPPORT for APAN



- APAN LATIN AMERICA-ENDOSCOPY SESSION
- APAN40-MEETING MALAYSIA :
 - APAN40-HPB SESSION
 - APAN40-AIG SESSION
 - APAN40- ECE SESSION
 - APAN40-MWG SESSION



WHAT'S ENGINEER DO



 <https://temdec.adobeconnect.com>

ADOBE® CONNECT™

APAN39-dental

Enter as a Guest

Name

with your login and password(Required for hosts, recommended for users)

Emergency contact

ML:150305dental@med.kyushu-u.ac.jp

phone: +81-92-642-5014

skype: kuricom

Notice

-Please mute your mic when you not

Attendees (3)

Active Speakers

Hosts (0)

Presenters (0)

Participants (3)

APAN40-ENGINEERING

- TRIAL CONNECTION in ENGINEERING ROOM



3. DAILY ACTIVITIES

- LOOKING FOR SOME JOURNAL
- MEET WITH SOME PROF IN KYUSHU (DENTAL MEDICINE)
- GO TO SOME INTERESTING PLACE

FELLOWSHIPS for RESEARCH in JAPAN 2015



SUMMER PROGRAM
for Postdoctoral Researchers

2
months in summer

POSTDOCTORAL FELLOWSHIP
for Young Researchers

SHORT-TERM 1-12 months
STANDARD 12-24 months

12-24
months

INVITATION FELLOWSHIPS
for Mid-Career, Senior and Eminent Researchers

SHORT-TERM 7-30 days
LONG-TERM 3-10 months

7-30 **14-60**
days

2-10
months

IPS provides an array of fellowship programs to invite researchers to Japan at each of their career stages - pre/postdoctoral through senior researchers. You may choose the program that best fits your career level and research plan.




IPS UNIVERSITIES

Content Type

- Article (2,895)
- Thesis/Dissertation (475)
- Book (207)
- Grant (102)
- eJournal (89)
- eBook (21)
- Journal (20)
- Other (4)
- [More...](#)

Publication Year

- 2015 (11)
- 2014 (218)
- 2013 (282)
- 2012 (299)
- 2011 (312)
- 2010 (269)
- 2009 (294)

1.  **Dental hypotheses**
 eJournal **Publication info** Farmington, CT, Connecticut, 2010-. Rossomando, Edward F
Volume(Year): Began with vol. 1, no. 1 (2010)
View fulltext: **1** 2010 to present ([Journal](#)) [Directory of Open Access Journals](#)
 2010 to present ([Journal](#)) [Fivine Publisher](#)
 01/01/2010 to present ([Journal](#)) [ProQuest](#)
[View terms of use](#)
2.  **Dental traumatology**
 eJournal **Publication info** International Association for Dental Traumatology ; International Academy for Sports Dentistry
Publication info [Copenhagen], Denmark, 2001-. Munksgaard
Volume(Year): Vol. 17, no. 1 (Feb. 2001)-
View fulltext: **1** 1985 to 1996 ([Journal](#)) [Wiley-Blackwell](#)
 2001 to present ([Journal](#)) [Wiley-Blackwell](#)
[View terms of use](#)
3.  **Dental traumatology**
 Journal **Publication info** International Association for Dental Traumatology

Wiley Online Library

Kyushu University [Log in / Register](#)

Home > Advanced Search

Search Results

There are 186732 results for: DENTAL

Sort by **Best Match**

Select All Save to profile Export Citation

VIEW 1-20 | 21-40 | 41-60 | 61-80 | Next >

-  **Edelstahl**
 KORROSION UND KORROSIONSSCHUTZ
 H.D. Pfeifer, G. Kempt, R. Stach, Pages: 1500-1641, 2006
 Published Online : 16 MAR 2006, DOI: 10.1002/9783527625859.ch3k
[Summary](#) | [PDF\(327K\)](#) | [References](#) | [Request Permissions](#)
 Cuts.LiQ by Kyushu University
-  **Influence of implantabutment joint designs on abutment screw loosening in a dental implant system**
 JOURNAL OF BIOMEDICAL MATERIALS RESEARCH PART B: APPLIED BIOMATERIALS
 Volume 75B, Issue 2, November 2005, Pages: 457-463, Tsuyoshi Kibagawa, Yasuhiro Tanimoto, Misako Odaki, Kimiya Nemoto and Masahiro Aida
 Article first published online : 22 JUL 2005, DOI: 10.1002/jbm.b.30328

FILTER LIST

PUBLICATION TYPE
 Journals (174254)
 Books (10027)
 Database (881)
 Lab Protocols (470)



Telemedicine Development Center of Asia



WELCOME PARTY



SWEET ROOM



STUDENT CAFE



HANABI (FIREWORK)



TELECONF. FAIR




HAWK BASEBALL

LAST TRAINING



- VISITING KAGOSHIMA UNIVERSITY
 - SHARING INFORMATION TECHNOLOGY ABOUT TELEMEDICINE in KAGOSHIMA UNIVERSITY HOSPITAL
 - POSSIBLE TO MAKE DENTAL SESSION for FUTURE WITH PROF NORIFUMI NAKAOMURA and OTHERS

 <p>Organized by : FKG UNIVERSITAS AIRLANGGA SURABAYA FKG UNIVERSITAS KAGOSHIMA JEPANG</p>	1. PROF NORIFUMI NAKAOMURA	TREATMENT OF CLEFT PALATE
	2. PROF HITOSHI KOMATSUZAWA	RECENT STAPHYLOCOCCUS INFECTION
	3. PROF MITSUO TORII	TREND CONSERVATIVE IN JAPAN

CONCLUSION

- TELEMEDICINE HAVE BENEFIT TO UPDATE and SHARE NEW-MEDICAL THERAPY
- TEST PREPARATION IS VERY IMPORTANT
- DOCTOR and ENGINEER WORK TOGETHER
- DENTAL MEDICINE AIRLANGGA UNIV. READY FOR APAN NEXT SESSION
- SHARE TO DENTAL MEDICINE in INDONESIA



THANK YOU
SEE YOU FOR NEXT DENTAL SESSION