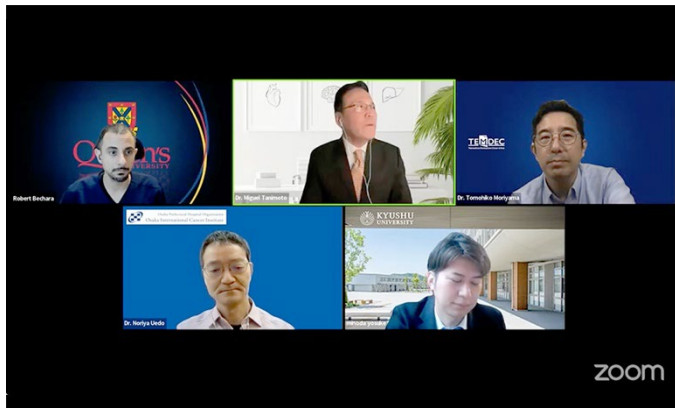


【 Connecting institutions 】

The National Institute of Medical Sciences and Nutrition (Mexico),
Kyushu University Hospital (Japan),
Queen's University (Canada)

【 Comments 】

At the webinar held in January, Dr. Noriya Uedo gave a presentation on underwater EMR, Dr. Yosuke Minoda gave a presentation on endoscopic suture methods, and Dr. Robert Bechara gave a presentation on POEM in complex achalasia. Dr. Tomohiko Moriyama and Dr. Miguel Tanimoto together chaired the webinar.

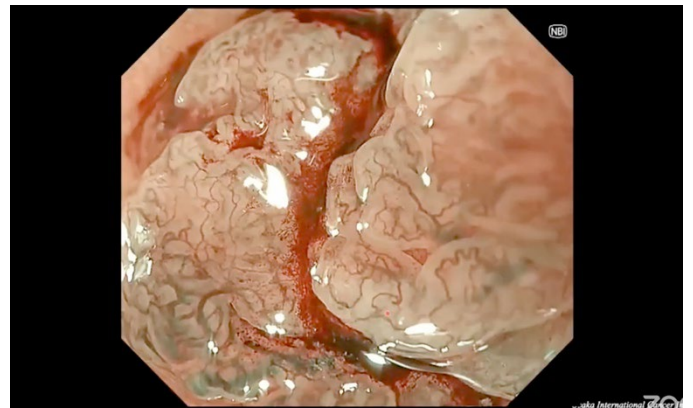
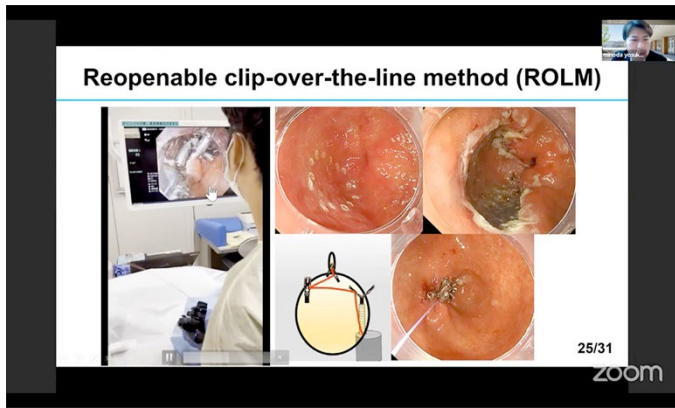


Monitor shows connected sites

Dr. Minoda makes a presentation

Picture taken at : Kyushu University Hospital

Picture taken at : Kyushu University Hospital

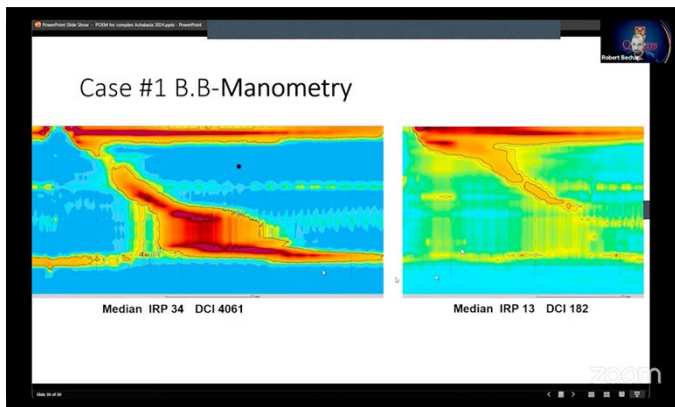


A presented slide

A presented surgical movie

Picture taken at : Kyushu University Hospital

Picture taken at : Kyushu University Hospital



A presented slide

Dr. Bechara makes a presentation

Picture taken at : Kyushu University Hospital

Picture taken at : Kyushu University Hospital