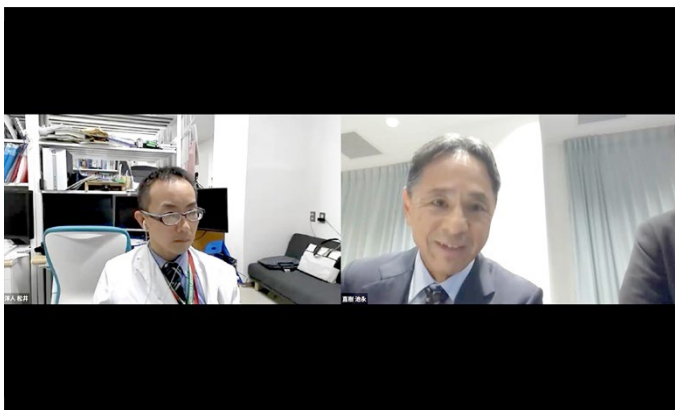


【 Connecting institutions 】

Kitakyushu Municipal Medical Center (Japan), Saga U (Japan), Saga-ken Medical Center Koseikan (Japan), Kyushu U H (Japan), Oita U (Japan), Kagoshima U (Japan), Kyushu Cancer Center (Japan), Kumamoto U (Japan), Kurume U (Japan), U of Occupational and Environmental Health (Japan), Fukuoka Sanno H (Japan), Nagasaki U (Japan), Fukuoka U H (Japan), Fukuoka U Chikushi H (Japan), U of Miyazaki (Japan), Yamaguchi U, Yoshida Campus (Japan), U of the Ryukyus (Japan), Sasebo Kyosai H (Japan)



Monitor shows connected sites

Picture taken at : Kyushu University Hospital

【 Comments 】

The experts in treatment for pancreato-biliary cancer from Kyushu and Yamaguchi had a conference to discuss clinical research. University of Oita and Yamaguchi reported the progress of ongoing clinical research. Kumamoto University proposed the novel clinical research, which was approved by all participants. The establishment of a novel database that can be used among participants at the conference was proposed.



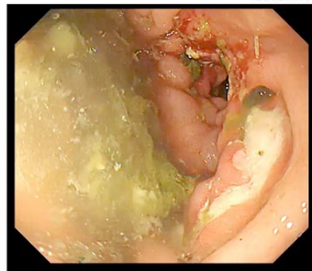
Dr. Okabe makes a presentation

Picture taken at : Kyushu University Hospital

この症例は？ 吻合部の超急性期潰

SSPPD術後11日目にDGEの評価目的に行ったGF
一胃側に形成した潰瘍(吻合部の空腸側に遷発性に形成される潰瘍とは機序が異なる可能性あり。)

★時期だけでなく、潰瘍のLocationを記載してもらおう。



A presented slide

Picture taken at : Kyushu University Hospital

Braun吻合に対する賛否既報

Year	Author	Journal	Number	賛否
2019	Schorn	Langenbecks Arch Surg	Meta-analysis Standard vs Braun vs Roux-en Yの3群比較	DGE、POPF、胆汁ろうを減らす 賛
2018	Zhou	BMC Gastroenterol	Meta-analysis 1672	DGE、胆汁ろう、在院日数を減らす 賛
2016	Hwang	JHBPS	RCT(有30 vs 無30)	差なし 否
2015	Xu	Medicine	Meta-analysis 1614	Morbidity、DGEを減らす 賛

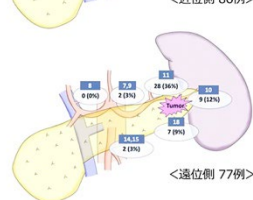
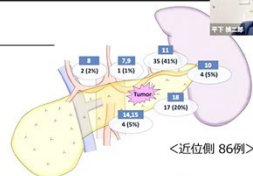
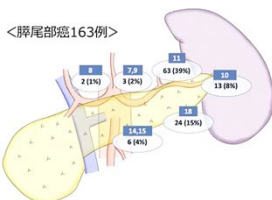
A presented slide

Picture taken at : Kyushu University Hospital

リンパ節転移部位

膵尾部癌163例のLN meta
No.8 1%; No.7/9 2%; No.14/15 4%
Aortaから腫瘍までの距離の中央値16mmで2群
遠位側の癌ではNo.8 LN metaなし

<膵尾部癌163例>



A presented slide

Picture taken at : Kyushu University Hospital



Dr. Hirashita makes a presentation

Picture taken at : Kyushu University Hospital