

【 Connecting institutions 】

Galle Face Hotel (Sri Lanka), Kathmandu Model H (Nepal), Center for Rural Healthcare and Telemedicine (pfect NEPAL) (Nepal), Seoul National U Bundang H (Korea, Republic of), Chiba U (Japan), Hokkaido U (Japan), Tohoku U (Japan), U of Malaya (Malaysia), Sunway Med Centre (Malaysia), Kyushu U H (Japan), Mongolian National U of Med Sciences (Mongolia), Dr. Moewardi General H (Indonesia), Dr Kariadi General H (Indonesia), U of Sumatera Utara (Indonesia), Sriwijaya U (Indonesia), Mongolia-Japan H (Mongolia)

【 Comments 】

This 56th APAN Meeting - HPB was a meaningful time in which doctors interested in hepatobiliary pancreas from each country attended online to introduce their surgical cases and share their opinions. Although the start time was early, many organizations attended from various Asian countries.



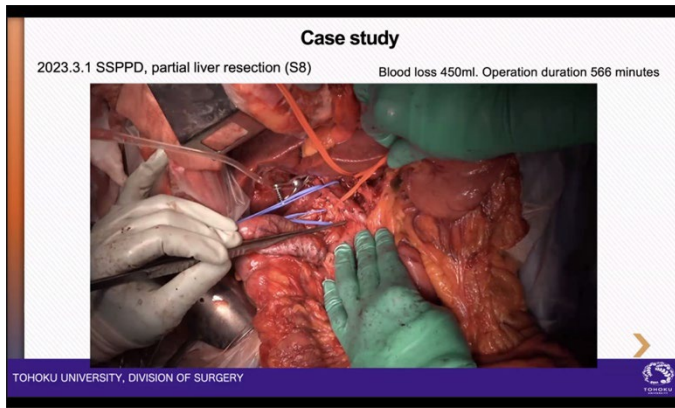
Teleconference view at Chiba University

Picture taken at : Kyushu University Hospital



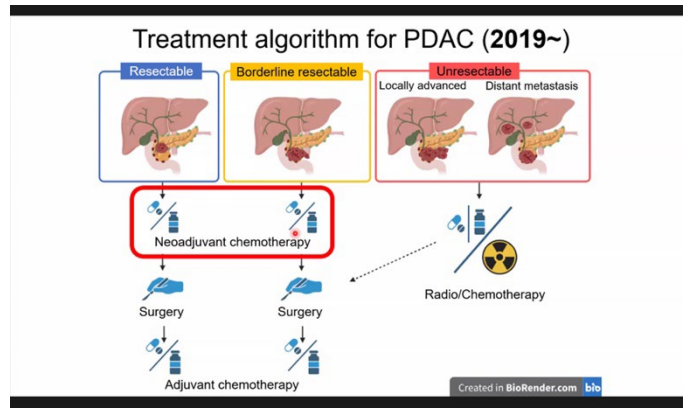
Teleconference view at Seoul National U Bundang H

Picture taken at : Kyushu University Hospital



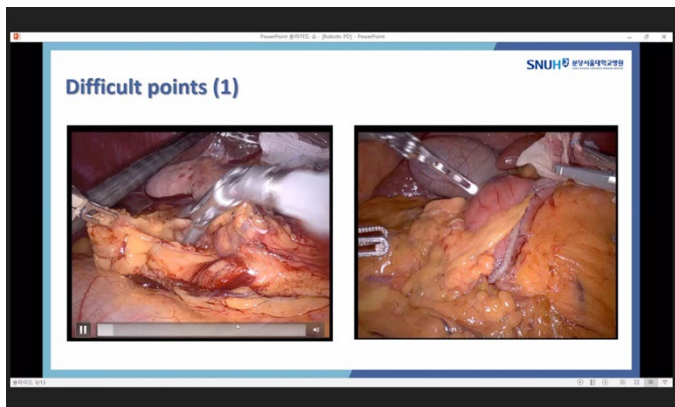
A presented slide

Picture taken at : Kyushu University Hospital



A presented slide

Picture taken at : Kyushu University Hospital



A presented slide

Picture taken at : Kyushu University Hospital



Teleconference view at Tohoku University

Picture taken at : Kyushu University Hospital