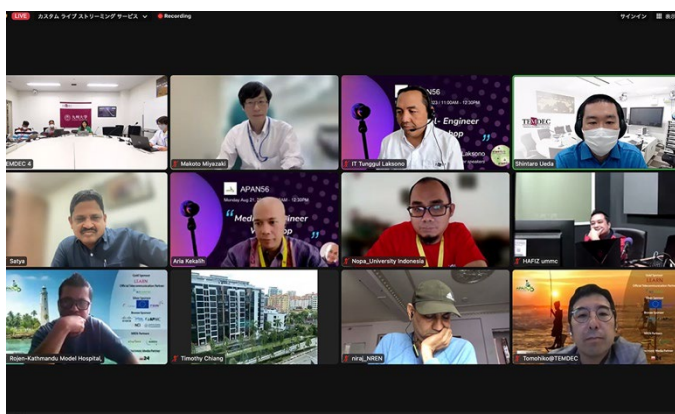


【 Connecting institutions 】

Galle Face Hotel (Sri Lanka), Kyushu UH (Japan), U of Malaya (Malaysia), Kathmandu Model H (Nepal), Brawijaya U (Indonesia), Sankara Nethralaya H (India), Asian Institute of Gastroenterology (India), Advanced Science and Technology Institute (Philippines), Khesar Gyalpo U of Medical Sciences of Bhutan (Bhutan), Nepal Research and Education Network(NREN) (Nepal), U of Indonesia (Indonesia), Teikyo U Utsunomiya Campus (Japan), 108 Military Central H (Vietnam), NASATI Office (Vietnam), National Taiwan U (Taiwan)

【 Comments 】

The plan was shared among co-researchers at this event for a research project to develop an e-learning program to learn technical support for telemedicine. The four engineers in charge of conducting each topic introduced their research theme. In the special lectures, Dr. Miyazaki introduced an e-learning platform such as Moodle, and Dr. Aria introduced medical education using VR.

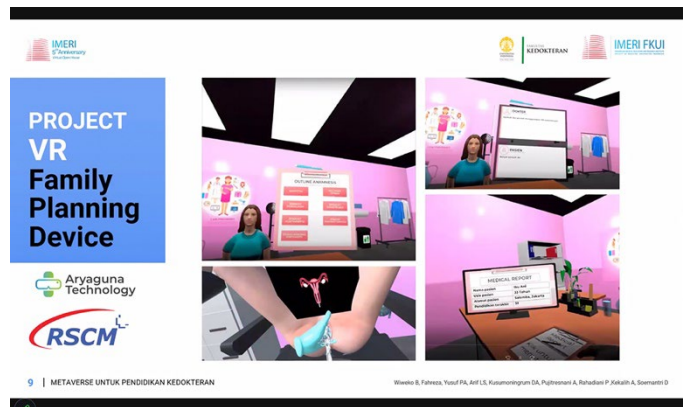


Monitor shows connected sites

Mr. Ueda makes a presentation

Picture taken at : Kyushu University Hospital

Picture taken at : Kyushu University Hospital

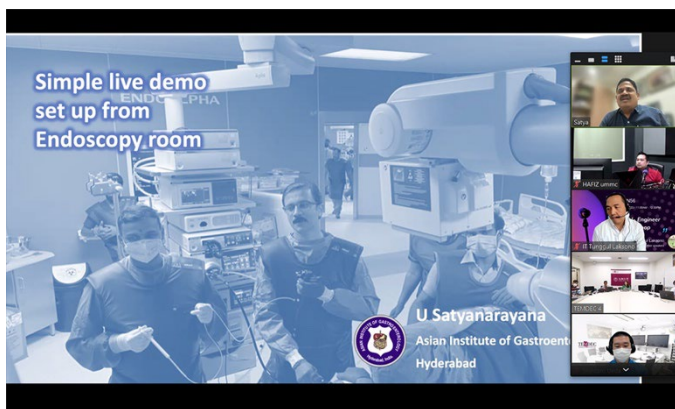


A presented slide

A presented slide

Picture taken at : Kyushu University Hospital

Picture taken at : Kyushu University Hospital



Monitor shows a presented slide and connected sites

Mr. Tunggul makes a presentation

Picture taken at : Kyushu University Hospital

Picture taken at : Kyushu University Hospital