

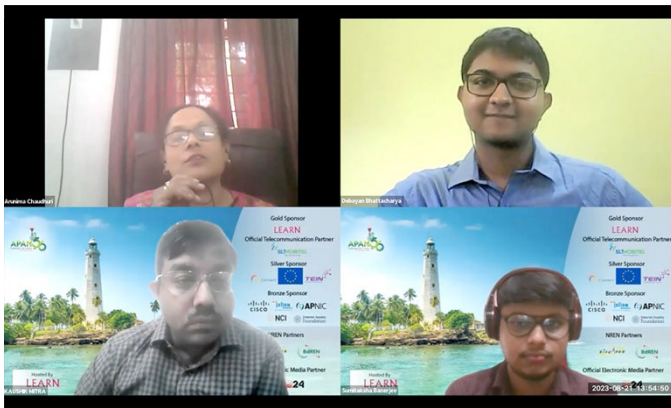
The 56th APAN Meeting -Medical Education

【 Connecting institutions 】

Galle Face Hotel (Sri Lanka),
Burdwan Medical College & Hospital (India),
Kyushu University Hospital (Japan),
West Bengal University of Health Sciences (India),
Pt.B.D.Sharma Post Graduate Institute of Medical Sciences (India),
All India Institute of Medical Sciences, Deoghar (India)

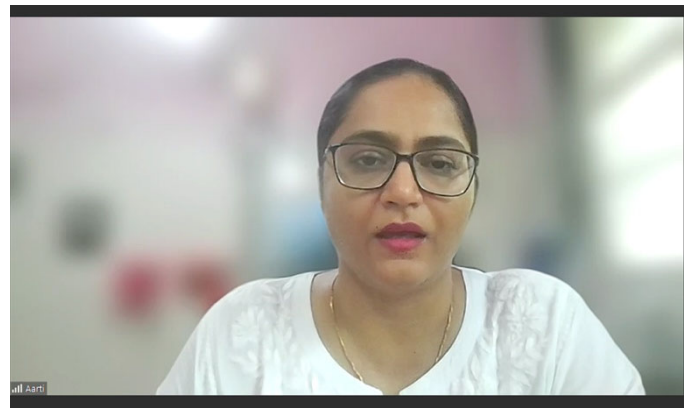
【 Comments 】

Collaborative teaching learning and research practices are of immense importance for the development of medical students as well as faculty members. In this session, we presented a few works done in collaboration with different institutions across India.



Monitor shows connected sites

Picture taken at : Kyushu University Hospital



Dr. Aarti makes a presentation

Picture taken at : Kyushu University Hospital

What Really Happens in Traditional Classroom?



A presented slide

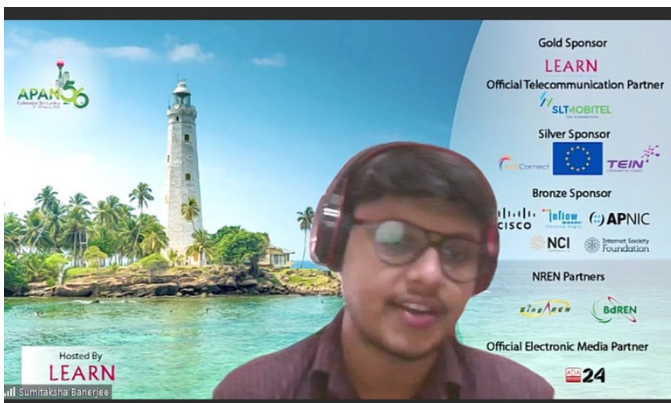
Picture taken at : Kyushu University Hospital

Conclusions:

The month-long activities of the Mentor Learner Web sessions were based on Self Directed Learning. Through the five threads in this topic, awareness, knowledge, implementation, and the future of SDL were aspects that learners delved into and learned from. Participants were satisfied with the way self-directed learning dealt with details.

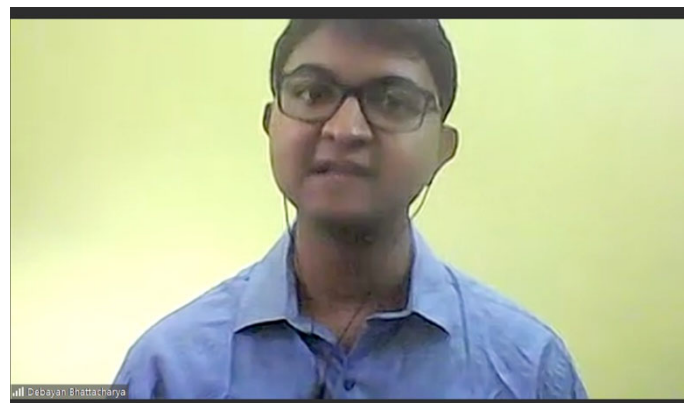
A presented slide

Picture taken at : Kyushu University Hospital



Mr. Sumitaksha makes a presentation

Picture taken at : Kyushu University Hospital



Mr. Debayan makes a presentation

Picture taken at : Kyushu University Hospital