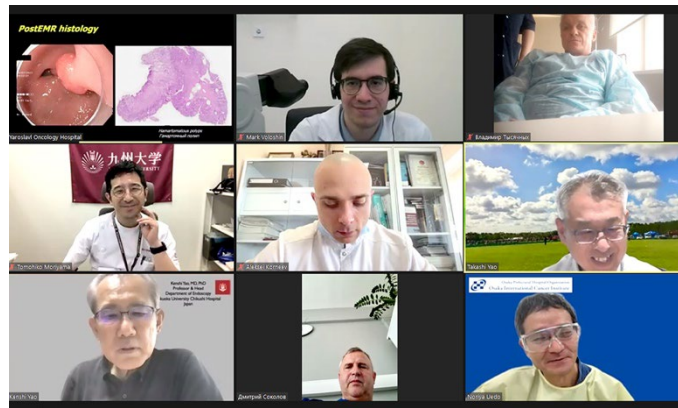


【 Connecting institutions 】

Kyushu U H (Japan), Yaroslavl Regional Cancer H (Russian Federation), Simferopol Expert Endoscopy Center (Ukraine), Fukuoka U Chikushi H (Japan), Osaka International Cancer Institute (Japan), Juntendo U (Japan), Kindai U (Japan), Burdenko H, Moscow (Russian Federation), Ashgabet First Aid H and Emergency Centers (Turkmenistan), Loginov Moscow Clinical Scientific Center (Russian Federation), R&M Medical Center Limited Liability Company (Russian Federation)

【 Comments 】

Endoscopic Network Expert Team (Endo-NET) Workshop was devoted to the practical issues of diagnosis, treatment and follow up of gastric lesions. Two challenging clinical cases of patients with gastric hyperplastic polyps and gastric tumor-like lesion was discussed with participants and faculty experts.



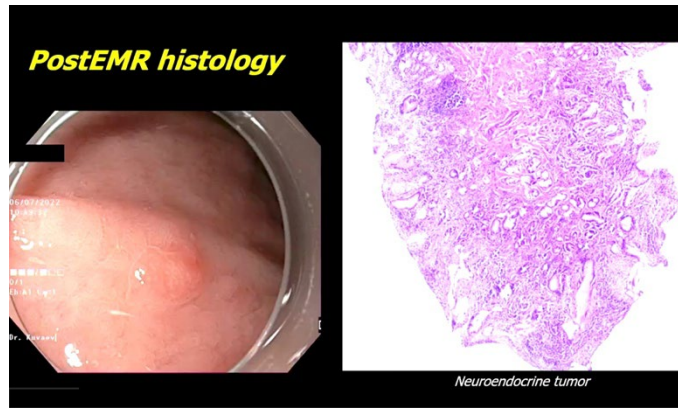
Monitor shows connected sites

Picture taken at : Kyushu University Hospital



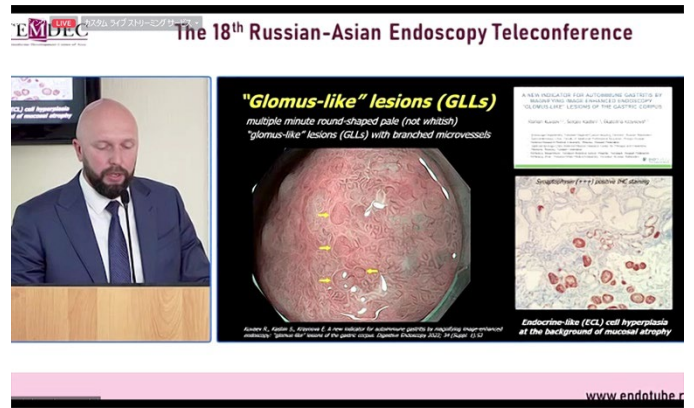
Teleconference view at Yaroslavl Regional Cancer Hospital

Picture taken at : Yaroslavl Regional Cancer Hospital



A presented slide

Picture taken at : Kyushu University Hospital



A presented slide

Picture taken at : Kyushu University Hospital



Dr. Moriyama, as a chair

Picture taken at : Kyushu University Hospital



Opening remarks by Prof. Pablo

Picture taken at : Kyushu University Hospital