

【 Connecting institutions 】

Kyushu University Hospital (Japan),
 Hakuoh University (Japan)
 Hakusuikai Hatsuishi Hospital (Japan),
 Bokuwakai Maki Hospital (Japan),
 Kurume University (Japan),
 Sagami Women's University (Japan),
 Hikita Hospital (Japan),
 Teikyo University Hachioji Campus (Japan)

【 Comments 】

Psychoanalysis, created by Sigmund Freud more than a hundred years ago, has contributed greatly to the development of mental health care. Psychoanalysis has developed not only as a therapeutic theory but also as a discipline to understand cultural society from the perspective of the unconscious. In this symposium of the Contemporary Psychoanalytic Society, psychoanalysts and psychotherapists gathered and discussed contemporary issues rooted in Japanese culture and society.



Monitor shows connected sites

Picture taken at: Kyushu University Hospital



Prof. Kitayama makes a lecture

Picture taken at: Kyushu University Hospital



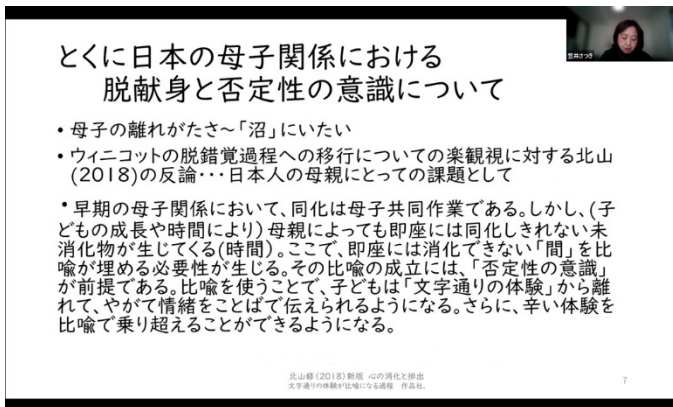
The panel discussion

Picture taken at: Kyushu University Hospital



A presentation slide

Picture taken at: Kyushu University Hospital



A presentation slide

Picture taken at: Kyushu University Hospital



Teleconference view at Kyushu University Hospital

Picture taken at: Kyushu University Hospital