

【 Connecting institutions 】

Kyushu University Hospital (Japan),
Nagasaki University (Japan)

【 Comments 】

In this teleconference, we discussed an indication of heart transplantation for a case with advanced heart failure hospitalized in Nagasaki University Hospital.



Monitor shows connected sites

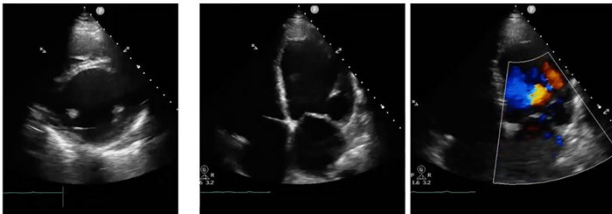
Picture taken at : Kyushu University Hospital



Teleconference view at Kyushu University Hospital

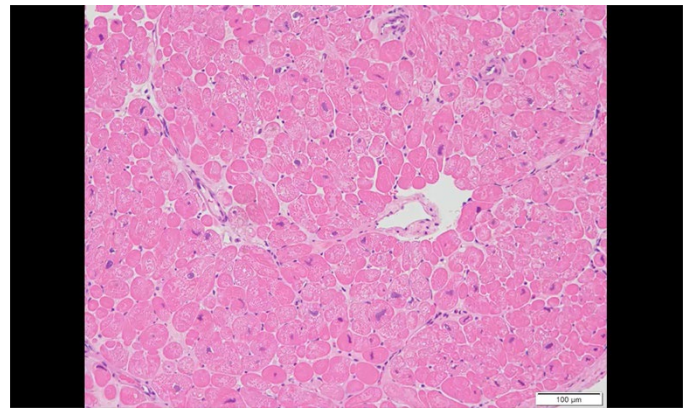
Picture taken at : Kyushu University Hospital

経胸壁心エコー検査 2022.11.18



A presented slide

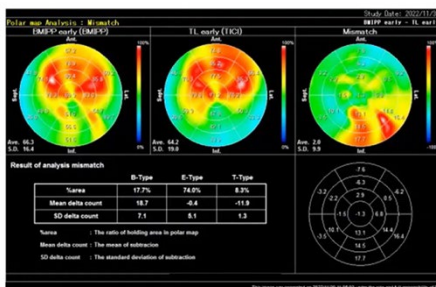
Picture taken at : Kyushu University Hospital



A presented slide

Picture taken at : Kyushu University Hospital

T₁-BMIPPシンチグラフィ 2022.11.30



A presented slide

Picture taken at : Kyushu University Hospital



Presentation from Nagasaki University

Picture taken at : Kyushu University Hospital