

【 Connecting institutions 】

Kyushu University H (Japan), Clinica Alemana (Chile), National Cancer Institute of Chile (Chile), Gastro Clinica, Costa Rica (Costa Rica), The National Institute of Medical Sciences and Nutrition (Mexico), Brazilian National Cancer Institute (INCA) (Brazil), Gastroclinica Cascavel (Brazil), Santa Cruz Japanese H (Brazil), H de Amor de Barretos (Brazil), Fukuoka University Chikushi H (Japan), Kyushu Medical Center (Japan), Kindai University (Japan), Ashiya Central H (Japan)

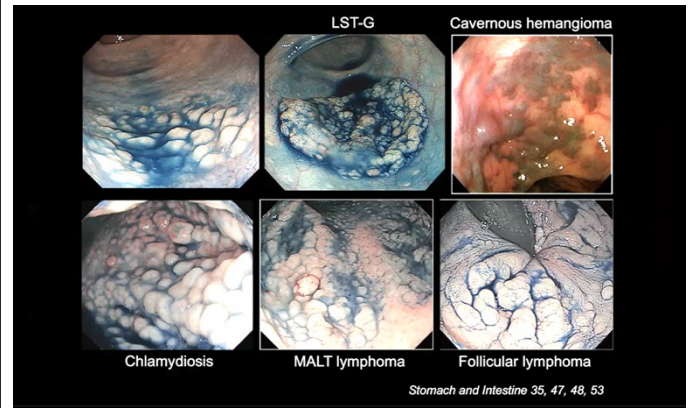
【 Comments 】

In this Latin teleconference, two interesting cases were presented from Japan. One was the early gastric cancer case in which image-enhanced endoscopy with zoom observation could point out areas of different histological grades in the lesion, and another was a case of rectal lymphoid follicle-like lesion developing typical ulcerative colitis. The hot discussion was made based on the excellent endoscopic images.



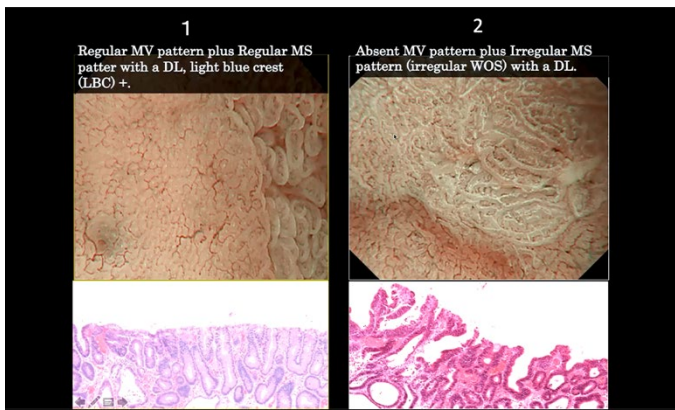
Monitor shows connected sites

Picture taken at: Kyushu University Hospital



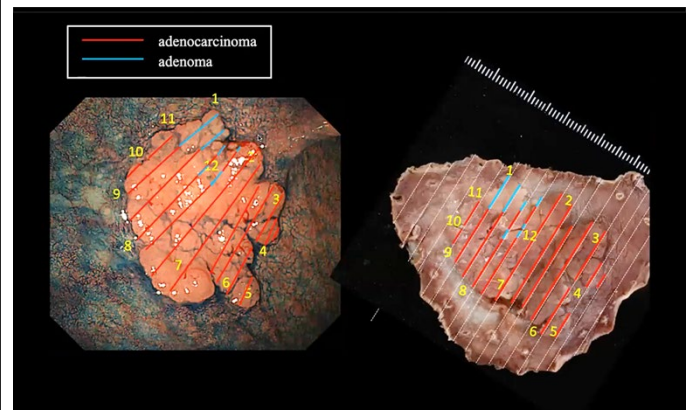
A presentation slide displayed on screen

Picture taken at: Kyushu University Hospital



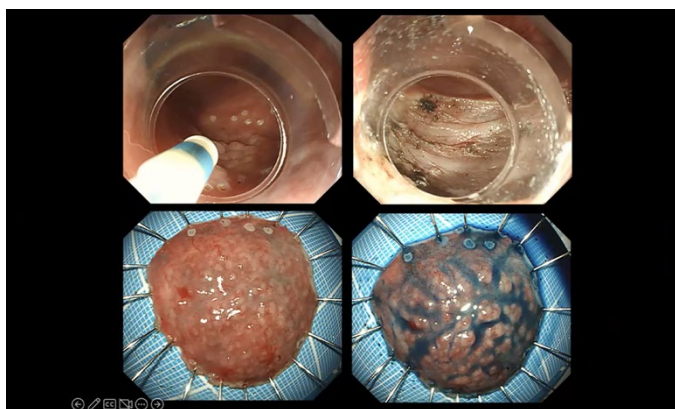
A presentation slide displayed on screen

Picture taken at: Kyushu University Hospital



A presentation slide displayed on screen

Picture taken at: Kyushu University Hospital



A presentation slide displayed on screen

Picture taken at: Kyushu University Hospital



Teleconference view at Kyushu University Hospital

Picture taken at: Kyushu University Hospital