

【 Connecting institutions 】

Kyushu University Hospital (Japan),
SCIEMENT, Inc (Japan),
School of Design, Hunan University (China),
Kyushu University, Ohashi Campus (Japan)

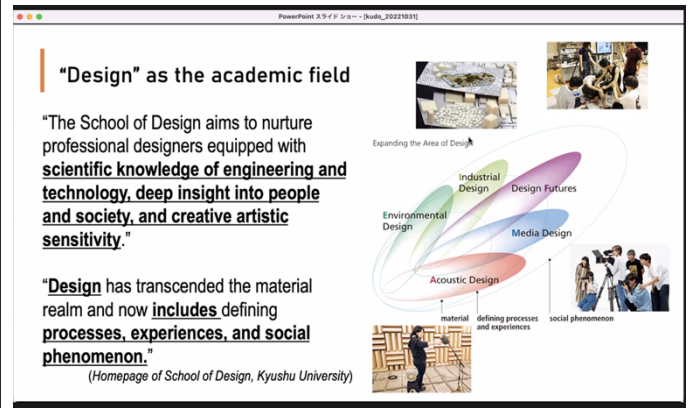
【 Comments 】

In this seminar, we invited Dr. Seo from SCIEMENT, Inc to give a special lecture on real-time 3DCG in medicine. We also welcomed Prof. Li from Hunan University to give an educational lecture on medical product design. Afterward, the participants had a valuable opportunity to discuss future collaboration between medicine and design.



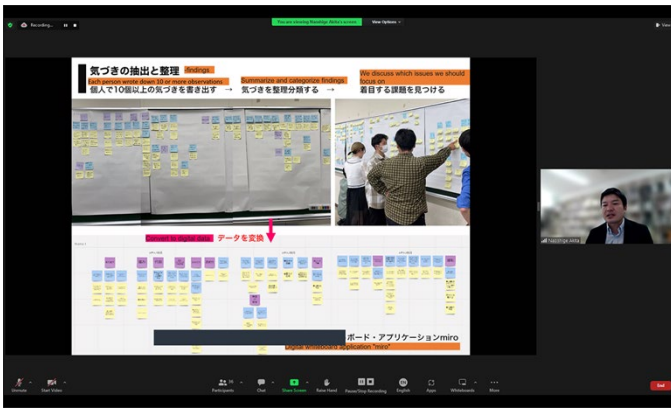
Monitor shows connected sites

Picture taken at: Kyushu University Hospital



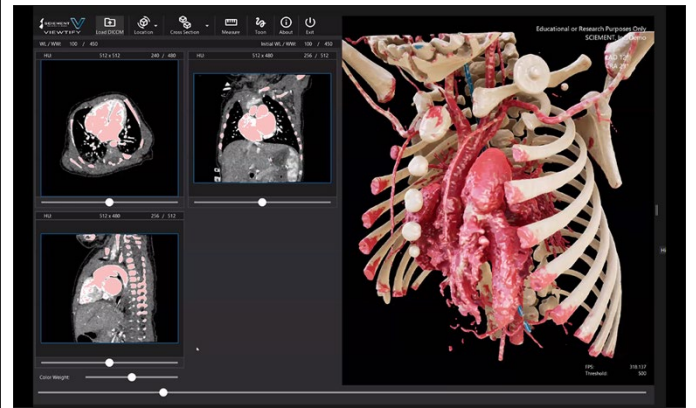
A presentation slide displayed on the screen.

Picture taken at: Kyushu University Hospital



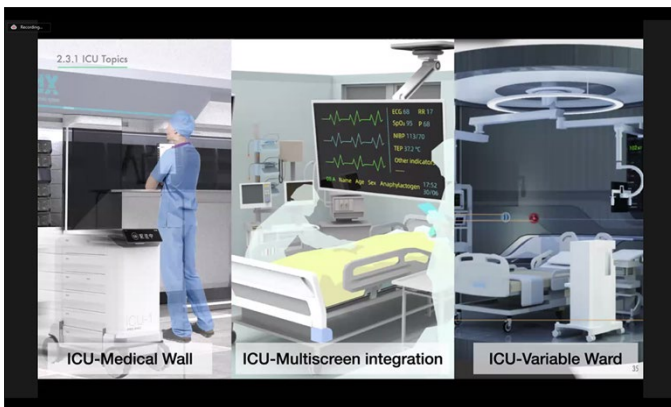
A presentation slide on activity report

Picture taken at: Kyushu University Hospital



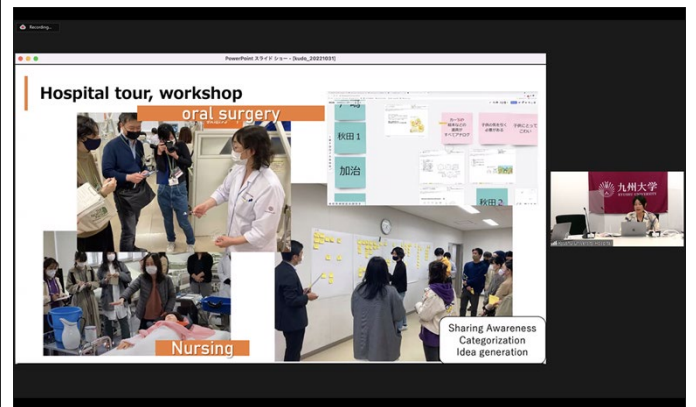
A presentation slide from Dr. Seo

Picture taken at: Kyushu University Hospital



A presentation slide from Prof. Li

Picture taken at: Kyushu University Hospital



A presentation slide on activity report

Picture taken at: Kyushu University Hospital