

#1621

2022.10.03

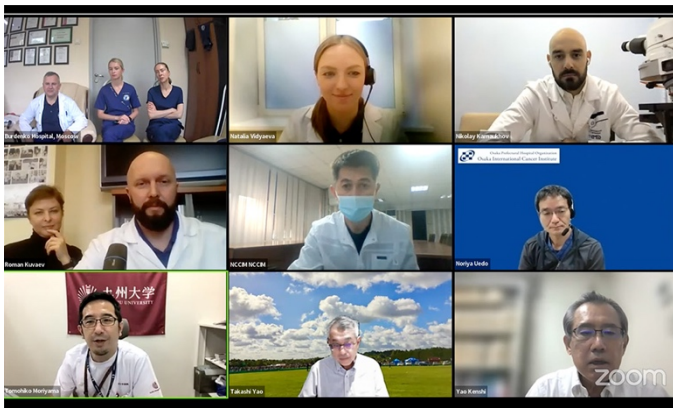
The 16th Endoscopy Teleconference with Russia

【 Connecting institutions 】

Kyushu U H (Japan), Yaroslavl Regional Cancer H (Russian Federation), Fukuoka U Chikushi H (Japan), Osaka International Cancer Institute (Japan), Juntendo U (Japan), Kindai U (Japan), Ashiya Central H (Japan), Burdenko H, Moscow (Russian Federation), National Center of Cardiology and Internal Medicine (Kyrgyzstan), Vladivostok Clinical Railway H (Russian Federation), Lobachevsky K+31 Clinic (Russian Federation), Loginov Moscow Clinical Scientific Center (Russian Federation)

【 Comments 】

The 16th Endoscopy Teleconference with Russia was focused on the challenging cases of gastric lesions. Two clinical cases of patients with epithelial and non-epithelial lesions were presented, endoscopic features and histological findings of the lesions were assessed together with endoscopists and morphologists. Diagnostic algorithm and practical issues of patient's management were discussed with the faculty experts.



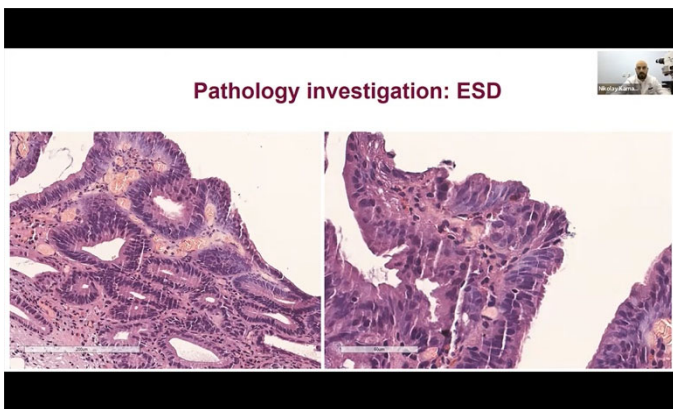
Monitor shows connected sites.

Picture taken at: Kyushu University Hospital



Dr. Roman (rt.) makes a presentation.

Picture taken at: Kyushu University Hospital



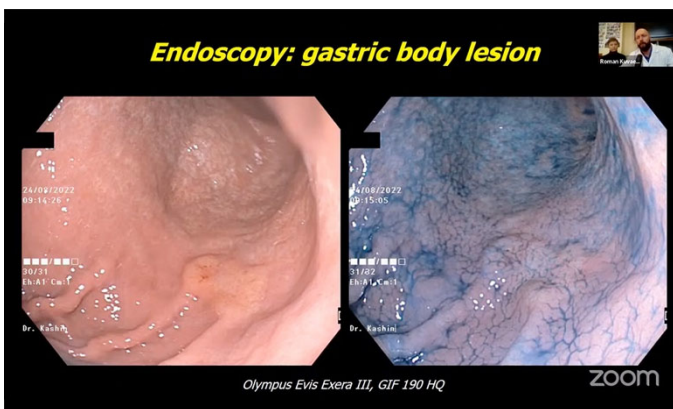
A presented slide.

Picture taken at: Kyushu University Hospital



A presented slide.

Picture taken at: Kyushu University Hospital



A presented slide.

Picture taken at: Kyushu University Hospital



Teleconference view at Burdenko Hospital, Moscow.

Picture taken at: Kyushu University Hospital