

【 Connecting institutions 】

Kathmandu Model H (Nepal), Nepal Research and Education Network(NREN) (Nepal), Ateneo De Manila U (Philippines), Tribhuvan U Institute of Medicine (Nepal), Penn State College of Medicine (United States), Sankara Nethralaya H (India), Center for Rural Healthcare and Telemedicine (pfect NEPAL), Nangi (Nepal), Shree shankha devi higher secondary school (Nepal), Gauri Shankar H (Nepal), Patan Academy of Health Sciences (PAHS) (Nepal), Centre for Information and Communication Technology for Development (Nepal)

【 Comments 】

All the presentations were excellent. Three young enthusiastic medical students presented very nicely on global health and telehealth. Dr Dennis from Philippines presented the recorded version of his presentation because of his busy schedule which was also full of digital health knowledge and development. Title was Urban health center's participation in rural health care and digital health may be the one of ways to go.



Monitor shows connected sites.

Picture taken at: Kyushu University Hospital

Telemedicine in Nepal (80% rural)

- 2002- First long range testing (Mohare), first long range wireless link
- 2006- Kathmandu Model Hospital, NREN, Nepal Wireless successful pilot project interconnecting rural areas, hospitals, international universities
- 2011- Formal inauguration of rural telemedicine centre at Patan Hospital
- 2019- 2nd National Telemedicine Workshop
- Present-** Regular international video sessions through APAN Medical Working Group, live presentations, case/telehealth discussions
- Near future- National Rural Health and Telemedicine in Kirtipur Hospital to become headquarters



A presentation slide displayed on screen.

Picture taken at: Kyushu University Hospital



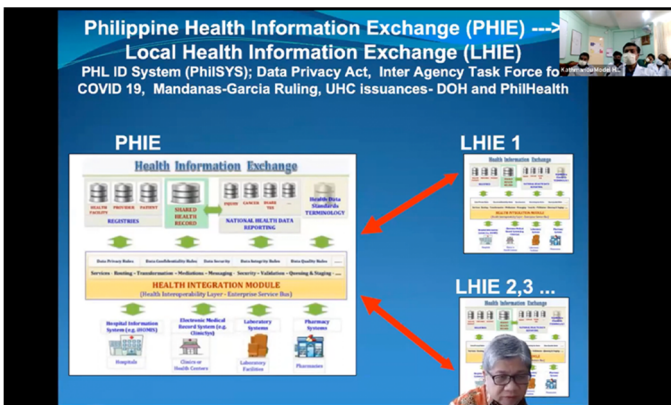
A presentation slide displayed on screen.

Picture taken at: Kyushu University Hospital



A presentation slide displayed on screen.

Picture taken at: Kyushu University Hospital



A presentation slide displayed on screen.

Picture taken at: Kyushu University Hospital



A presentation slide displayed on screen.

Picture taken at: Kyushu University Hospital