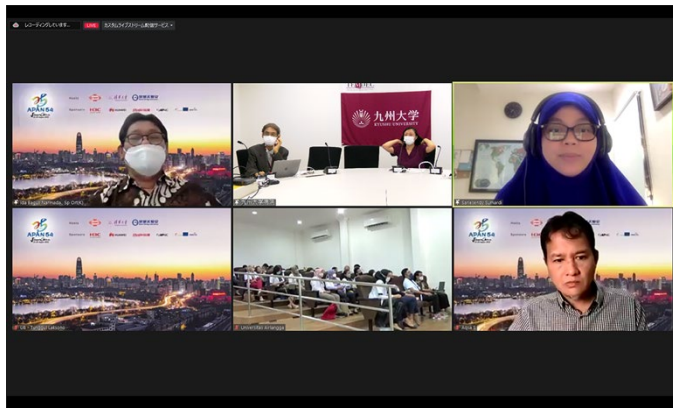


【 Connecting institutions 】

Airlangga University (Indonesia),
University of Indonesia (Indonesia),
Kyushu University Hospital (Japan),
Brawijaya University (Indonesia),
University of Sumatera Utara (Indonesia),
Hasanuddin University (Indonesia)

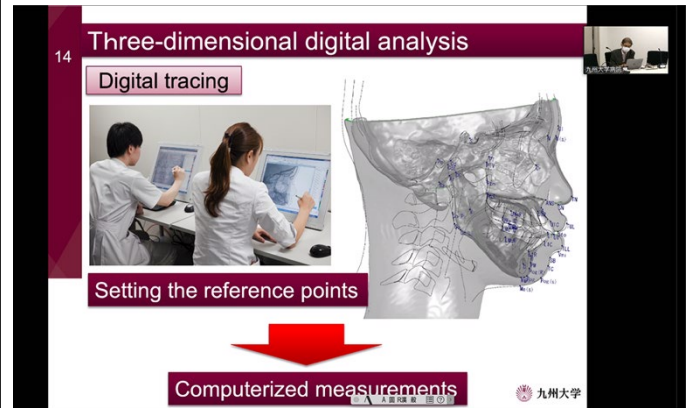
【 Comments 】

By utilizing digital orthodontics, dentists use technology to collect information, analyze the potential teeth or jaw problems and use digital software platforms to formulate a treatment plan and execute the treatment plan using appliances built on digital ecosystems. It is also becoming possible to remotely monitor treatment and control it. This session is trying to reveal the challenge of digital orthodontics in the near future.



Monitor shows connected sites.

Picture taken at: Kyushu University Hospital



A presentation slide displayed on screen.

Picture taken at: Kyushu University Hospital



A presentation slide displayed on screen.

Picture taken at: Kyushu University Hospital



Dr. Takahashi makes a comment.

Picture taken at: Kyushu University Hospital



Teleconference view at Kyushu University Hospital.

Picture taken at: Kyushu University Hospital



A presentation slide displayed on screen.

Picture taken at: Kyushu University Hospital