

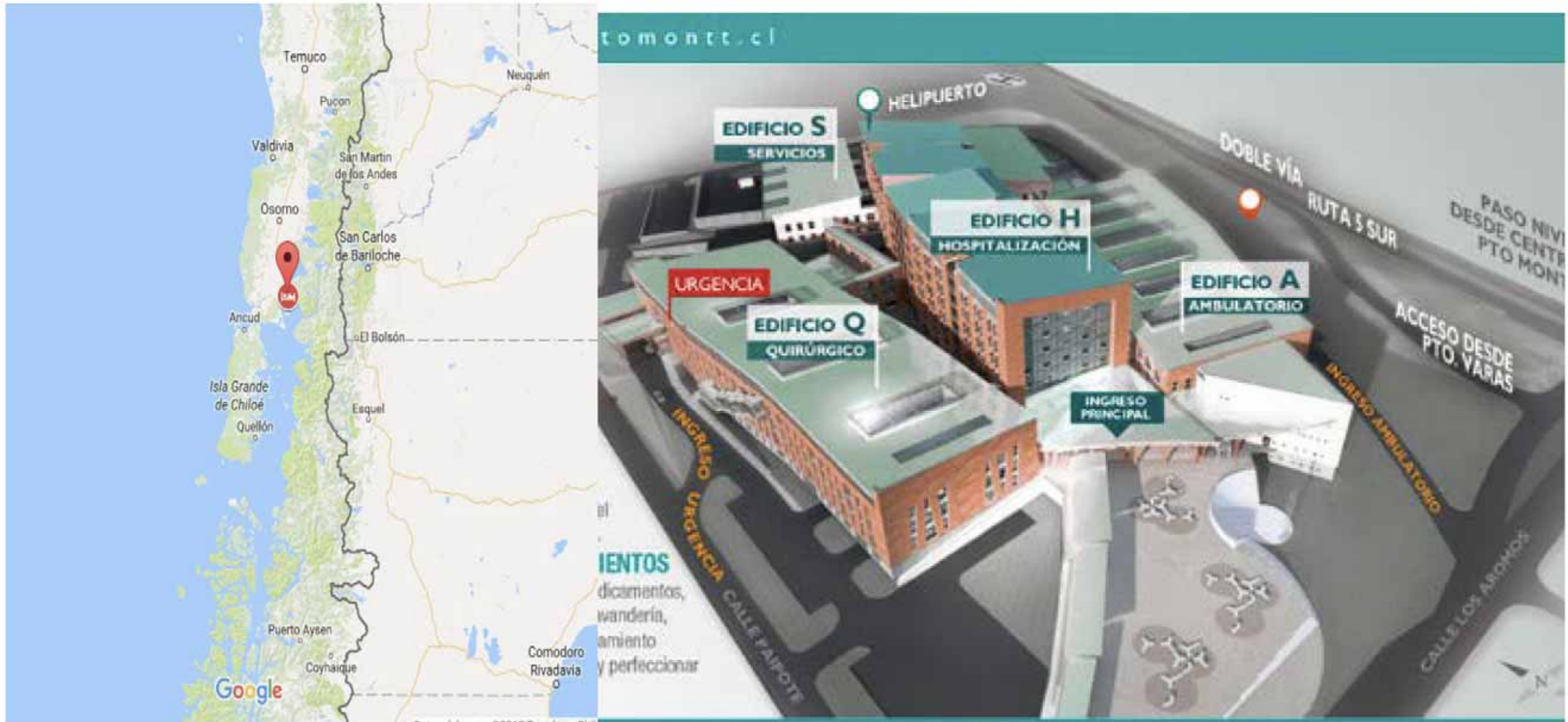


# HOSPITAL INTRODUCTION: CLINICS & TECHNOLOGY

## Hospital Puerto Montt

Rodrigo Mansilla V. MD, MHA  
Cesar Villagra IT Engineer HPM





Beds: 550 Population Target: 600.000 patients

## ENDOSCOPY UNIT

CONSTRUYENDO PUENTES EN GASTROENTEROLOGÍA

4 SURGEONS

3 GASTROENTEROLOGISTS

1 PEDIATRICIAN

2 NURSES

6 ASISTENTS

6 GI ENDOSCOPY ROOMS

1 RX ROOM

4000 UGIE

800 COLONOSCOPIES

350 ERCP

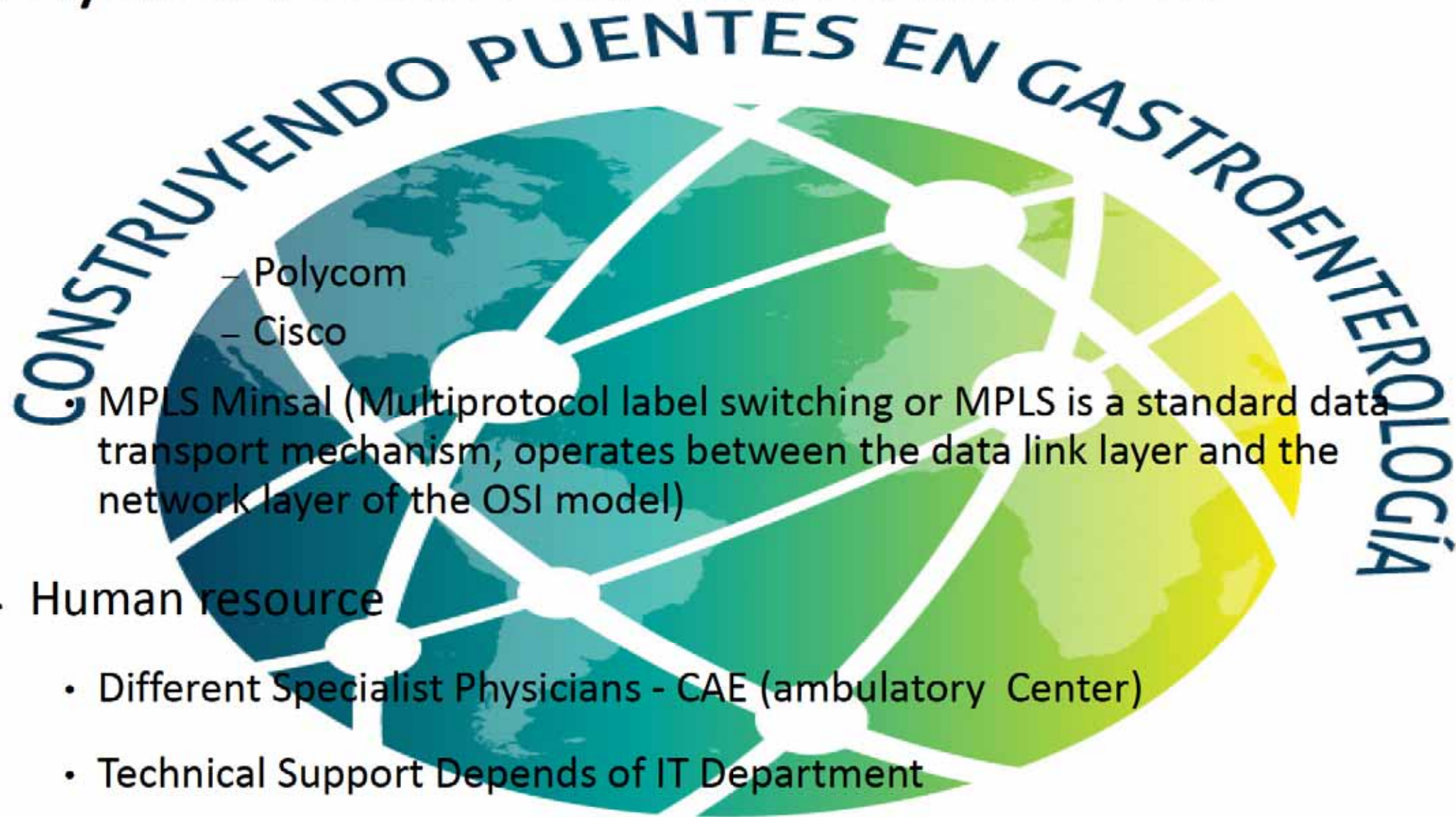
50 PGT

# Telemedicine Experience HPM



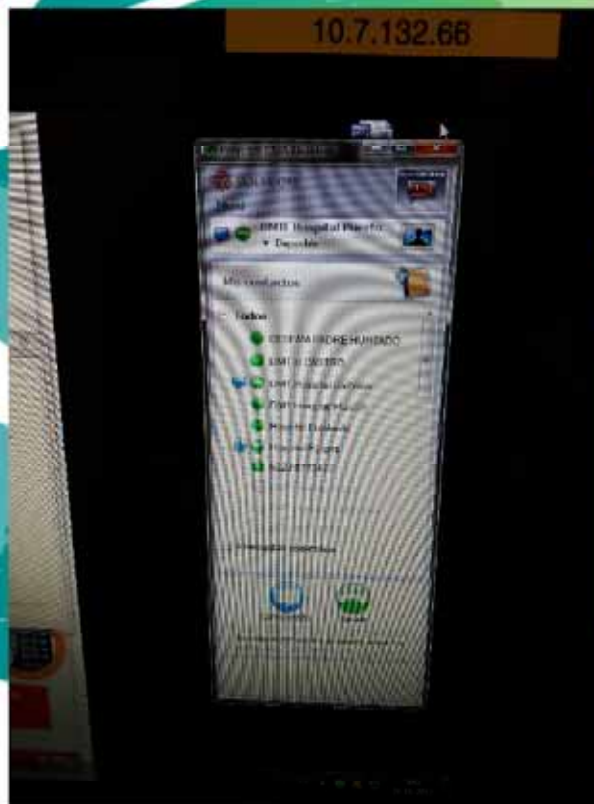
- Existing telemedicine IN GASTROENTEROLOGY 2 hours per week (15 patients)
- 14 specialities.
- Future plans:
  - New endoscopist in Chiloé starting January to discuss endoscopy cases

# Physical resources Telemedicine HPM



# Telemedicine HPM equipment

Emergency room HPM	Ambulatory center	Ambulatory room
Polycom hdx 8000	Polycom CMA Desktop	Polycom HDX 7000

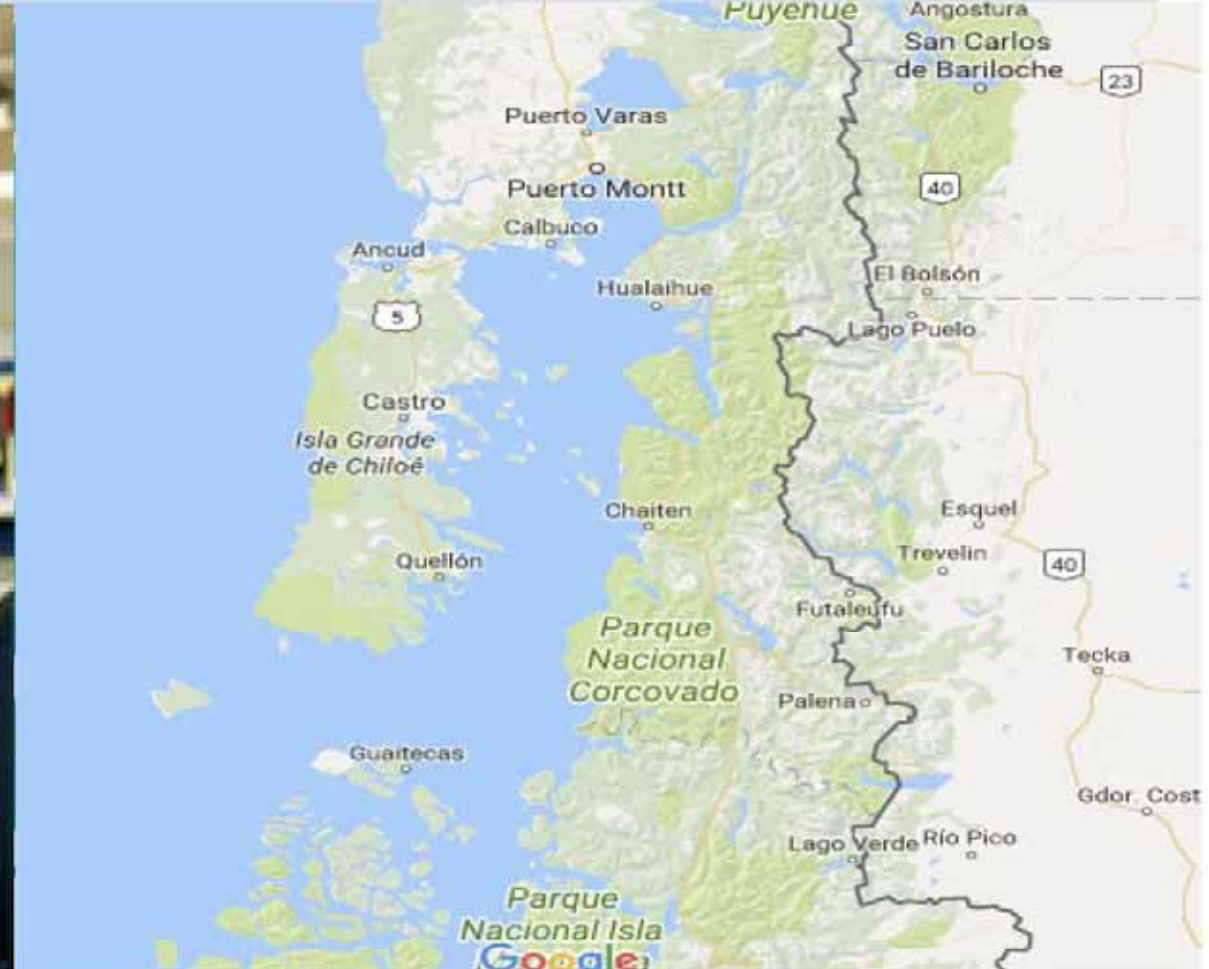


# Telemedicine HPM equipment

PUENTES EN C

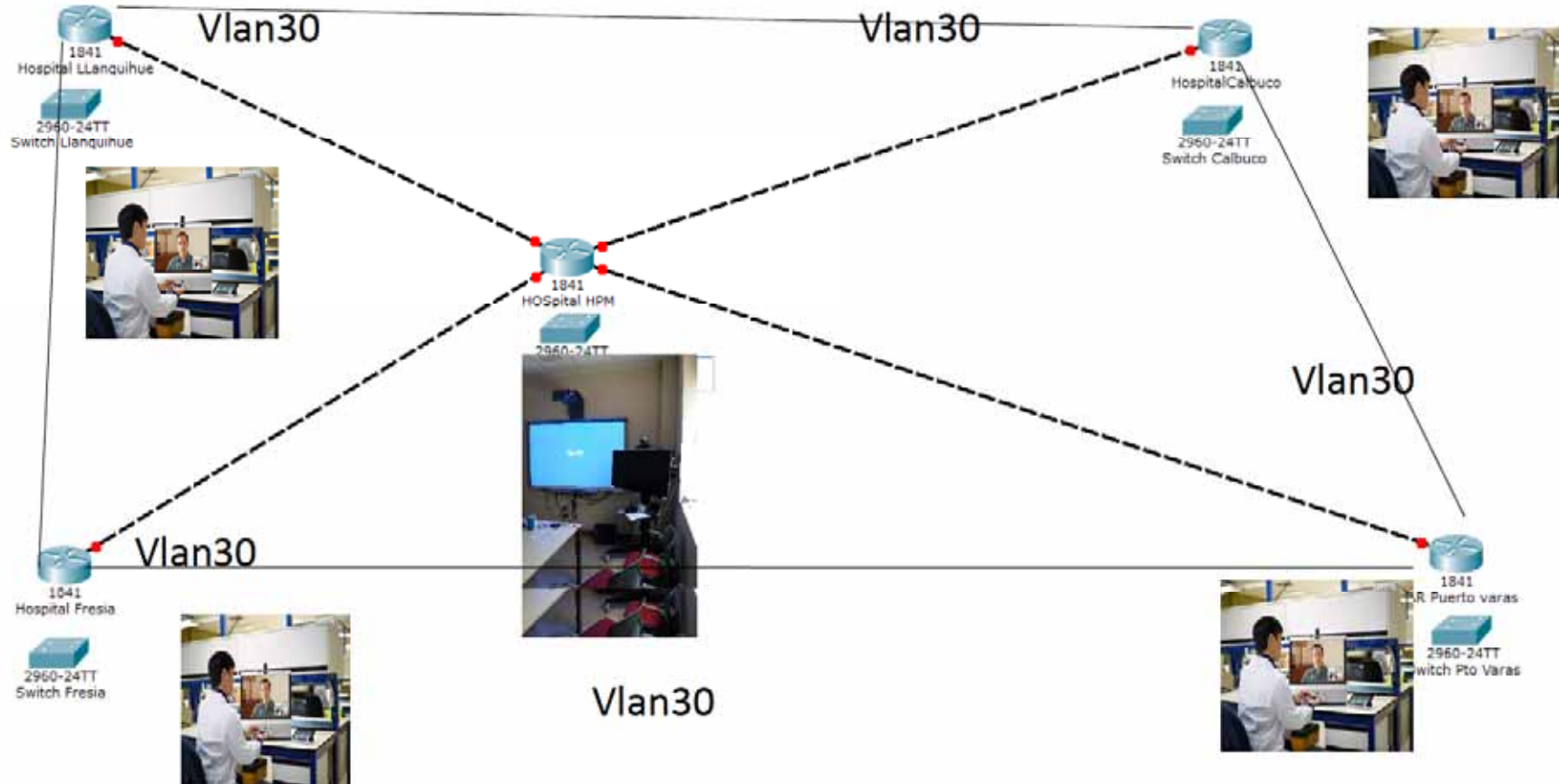
Ambulatory room

Cisco EX60



# Telemedicine communication HPM Network

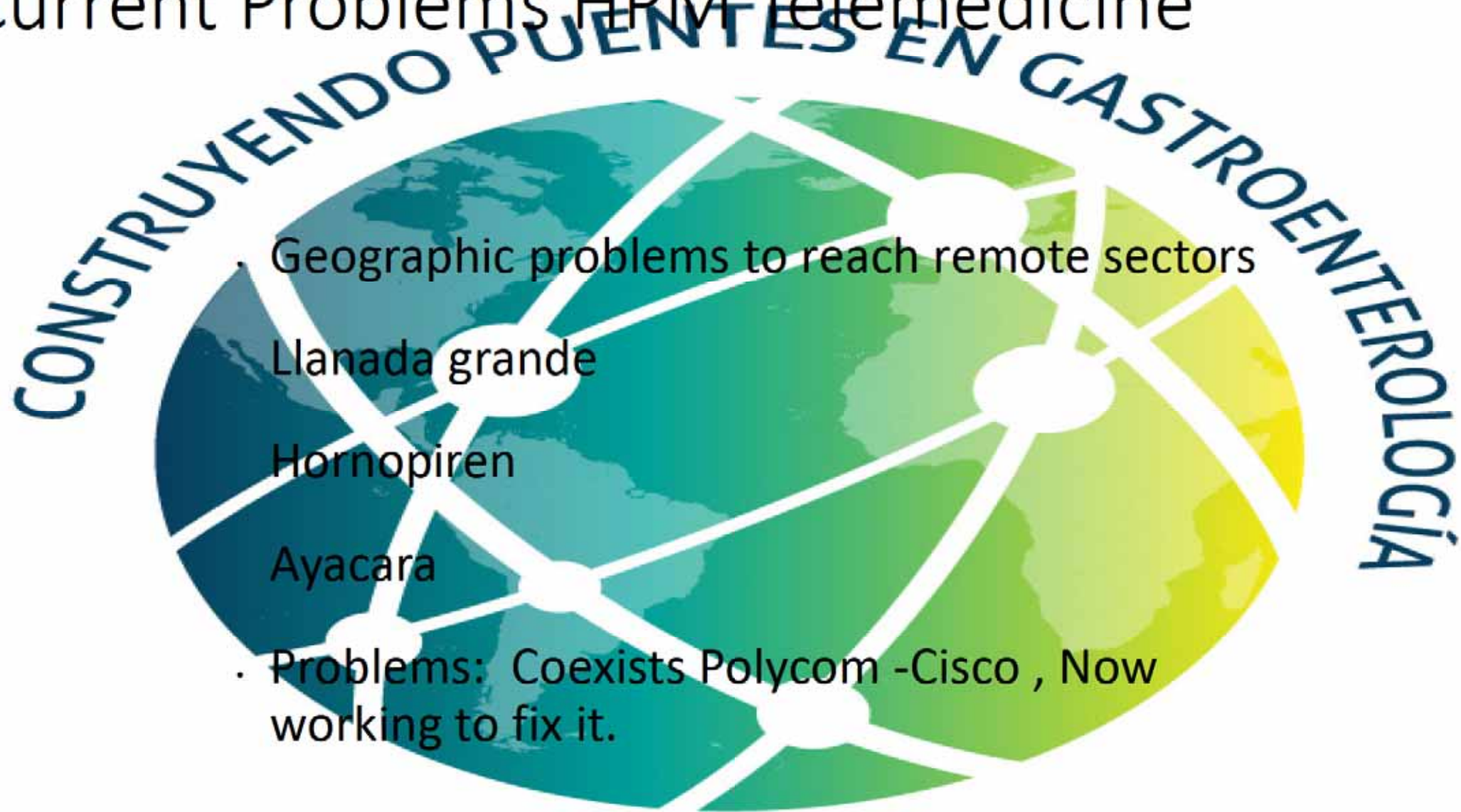
UNIVERSIDAD PUENTES EN GARCIA



TELEFONOLOGÍA



# Current Problems HPM Telemedicine



**TE MDEC**  
Telemedicine Development Center of Asia



九州大学  
KYUSHU UNIVERSITY



Thanks for your kind attention

