



INSTITUTO CHILENO JAPONÉS
DE ENFERMEDADES DIGESTIVAS

HOSPITAL INTRODUCTION: CLINICS & TECHNOLOGY

Hospital Clínico San Borja Arriarán

Dra. Verónica Silva Figueroa

Ing. Alvaro Ramirez



Introduction

- Clinical Hospital San Borja Arriarán.
- Central Health Service. Santiago.
- 14 clinical services
- 547 bed



Gastroenterology Service



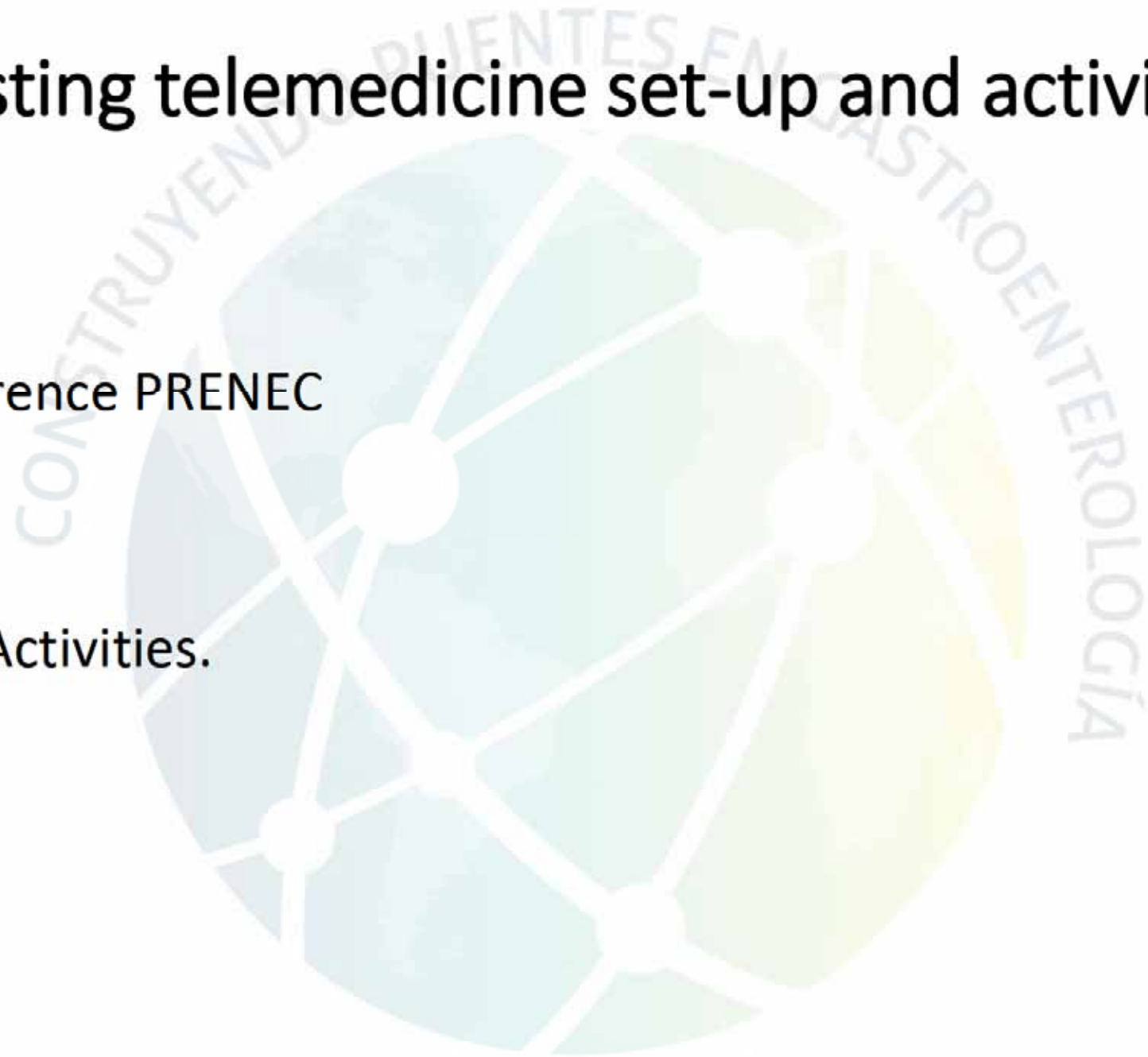
- 10 hospital bed
- Endoscopic Center: Chilean Institute of Digestive Diseases Dr. Pedro Llorens.
- Endoscopic Surgery Center Dr. Nib Soehendra.
- 18 specialists: gastroenterologists, surgeons, anesthetist.

Gastroenterology Service



Existing telemedicine set-up and activities

- Teleconference PRENEC
- Teaching Activities.

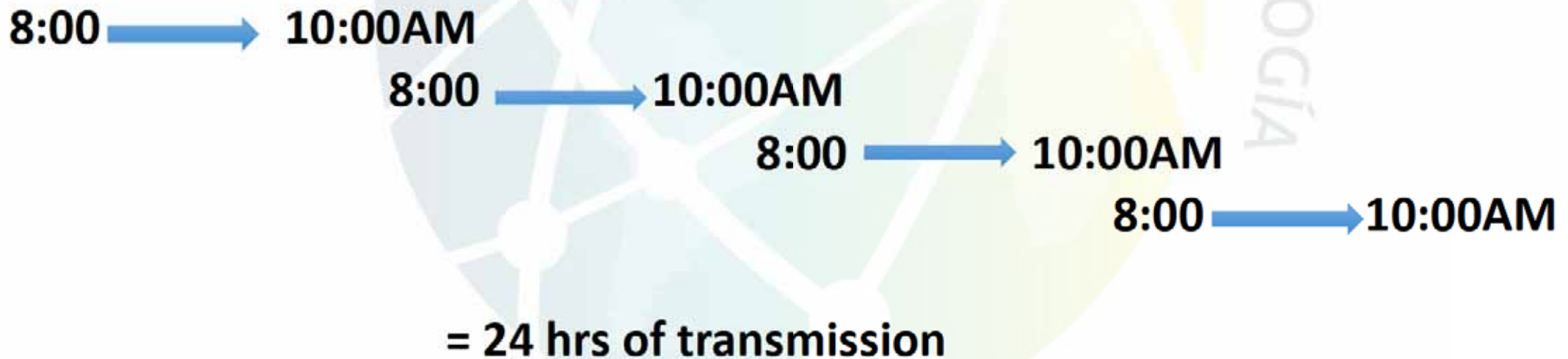




Future plans

- Training in endoscopic techniques for the resolution of pathologies to doctors in the healthcare network and others.

“24 hours Training Center”



Hospital Telemedicine Resource

- Qualified Human Resource:
 - ✓ A Computer Engineering professional in charge of Telemedicine.
- Specialized equipment:
 - ✓ A basic car that has All in One and a Smart Document Camera 450.
 - ✓ Internet
 - ✓ WIFI connections or cables

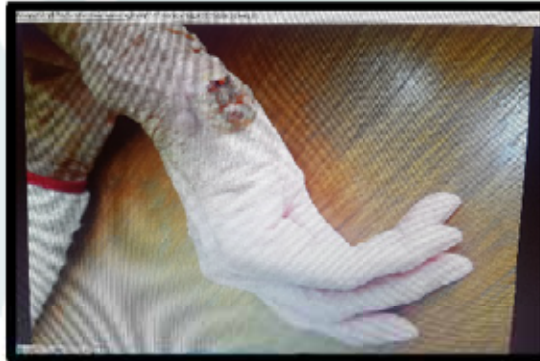


Experience

- On December 11, 2014, the use of this resource in the establishment begins.
- Contact was made with specialists from each ends of the country (South and North).
- This was the beginning where patients of high complexity, with a lot of problems of transfer to Hospitals, were allowed to reach the medical assistance of a specialist and / or a multidisciplinary team.
- The Children's Neuropsychiatry Team of the establishment has formed an international community where they present their cases: Chile, Uruguay, Spain, Argentina and Costa Rica participate.

Experience

- Another achievement is the progress achieved in Teledermatology
- Web page that sends images from APS to specialists to be reviewed.



Case of basal cell carcinoma derived, through Teledermatology, to the HCSBA specialist from the "Dr. Norman Voullieme Health Center".

Current Problems

- Lack of equipment

