

Catholic University Hospital



Engineer Mr. Francisco Schmidt
Andrés Donoso Durante M.D.



Introduction of Catholic University Hospital Endoscopy unit

- Shared by Gastroenterology and Digestive Surgery Departments
- Five endoscopy rooms (50 - 60 diagnostic procedures per day)
 - Four rooms for diagnostic and therapeutic procedures (low and mild complexity):
 - Polypectomy
 - APC therapy
 - Band ligation
 - One room for advanced therapeutic procedures (including propofol deep sedation and general anaesthesia capacity)
 - DBE
 - Diagnostic and therapeutic EUS
 - EMR/ESD
- One room for functional tests (24-Hour pH monitoring and Esophageal Manometry)
- One room for lower EUS
- Recovery area with 10 beds including monitoring capacity

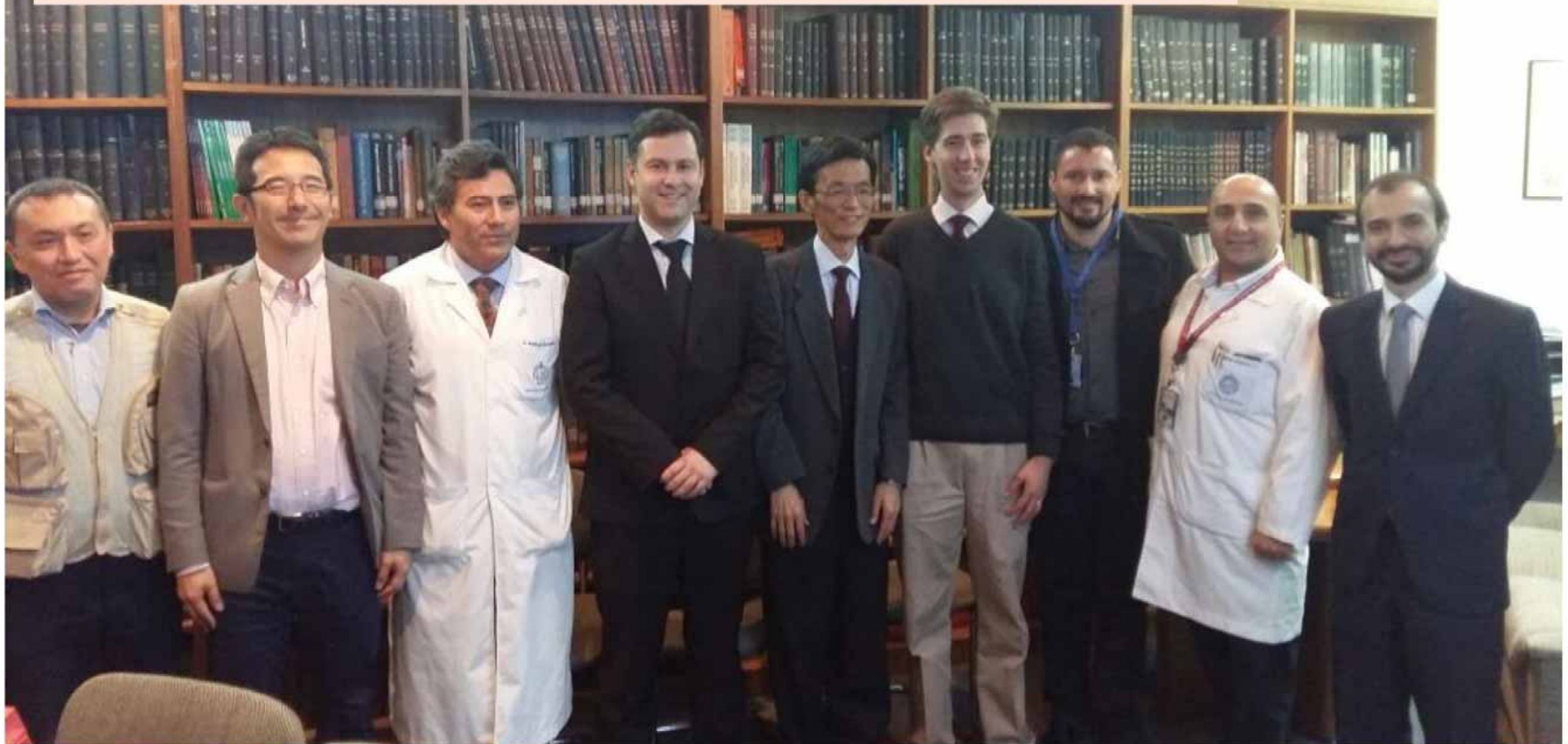
Catholic University Hospital Endoscopy Unit: TRAINING AND EDUCATION

- Gastroenterology Residents
- Pediatric Gastroenterology Residents
- Digestive Surgery Residents
- Coloproctology Residents
- Therapeutic Endoscopy Resident (ERCP)
- Visiting Doctors for Observership Special Programs (Magnifying endoscopy/EMR/ESD)
- Capacitation for visiting Nurses and Technicians

Meeting with Professor Shimizu in Kobe (2016)



Meeting with Professor Shimizu and his Team in Catholic University (2016)



Our first connection (2016)



Search Participants

Participants: 15

- 301 Hospital
- a
- Clinica Alemana
- Group Series 1443435010
- Hospital Sharp Mazatlan
- INCA-RJ
- Kyushu University Hospital...
- LEICIMI, University of Cos...
- National Autonomous Uni...
- Pontificia Universidad C...**
- Pontificia Universidad Jav...
- Recorder



- Clinica Alemana
- Kyushu University Hospital VR
- 301 Hospital





**“EXPERT LECTURES BY TELECONFERENCE
PROGRAM”**
*(POSSIBLE DUE TO KIND SUPPORT OF DR. SHIMIZU
AND TEMDEC’S TEAM)*

Our first "Expert Lecture by Teleconference" (Dr. Uedo, 2017)



Dr. Noriya Uedo and his residents transmitting from Osaka (2017)

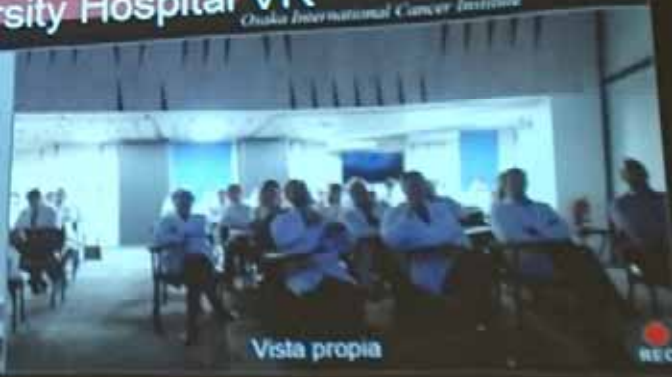
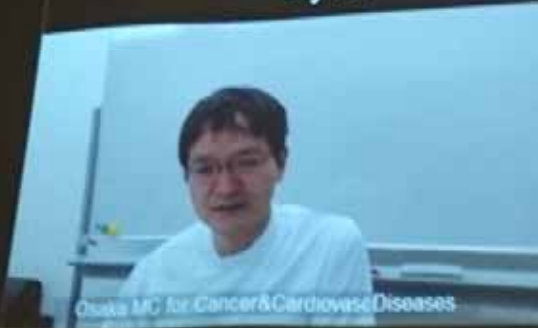


Excellent image and sound quality

Detection of abnormality
Sight or recognition?



Kyushu University Hospital VR
Osaka International Cancer Institute



Second "Expert Lecture by Teleconference" (Dr. Toyonaga, 2017)



Future plans:

- Continuous attend and active participation on Dr. Shimizu's Teleconferences
- Maintain our "Expert Lectures"
 - Expand to other areas (not only endoscopy)
- Take advantages of telemedicine as a tool for remote assistance on complex procedures

Hospital Telemedicine resource

- Staff Faculty of Medicine:
 - Faculty of Medicine: Mainly (Engineer, technical staff)
 - University Informatics Direction: Technical Support, BW and monitoring
- Network and Internet: Pontificia Universidad Católica de Chile
 - 5 Campuses connected
 - More than 7.000 computers connected
 - More than 5.000 wire connections and 1.200 Access Points
 - Internet connection (level 3)
 - BW (10 Gbps)
 - National: 1,2 Gbps
 - International: 8,8 Gbps
 - Google Chile: Direct connection, 10 Gbps
 - UC member of REUNA:
 - Connection to other universities and Investigational National and International Centers

Hospital Telemedicine resource

- Equipment set-up (Faculty of Medicine):



**Vaddio ClearSHOT 10
USB 3.0 PTZ
Conferencing Camera**

**Plantronics
Calisto 620**



Logitech Webcam C930e



Polycom H.323 System



ConferenceCam BCC950

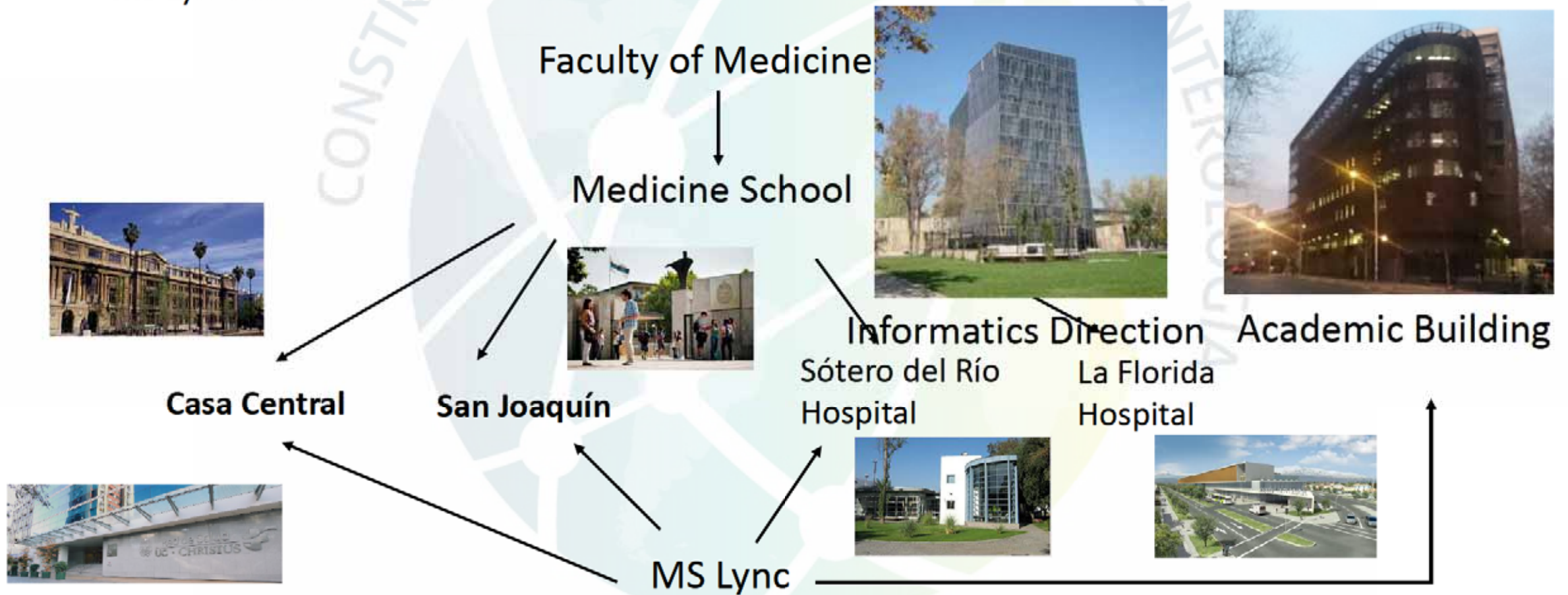


**Sistema de videoconferencia Logitech
ConferenceCam CC3000e**

Hospital Telemedicine resource

- Teleconference Systems Implemented on the Faculty of Medicine

MS Lync: Inside solution



Hospital Telemedicine resource

- Teleconference Systems Implemented on the Faculty of Medicine

MS Lync: Inside solution

Vidyo (Desktop): TEMDEC, REUNA (Plaza)



San Carlos



C. Oriente



Aca



Hospital Telemedicine resource

- Experience:



Video conference from operating room



Connection Tests



Hospital Telemedicine resource

- Current Problems:

- Planning, coordination, schedule -> Commitment
- Connection Tests
- Understanding Telemedicine concept: “Can´t we use Skype?”
- Technical: Sound, light, network (not always)

- Expectation:

- Take the chance to really understand what Telemedicine can be, its potential as flexible tool for academic knowledge development and the opportunity it offers us become a great academic community (no boundaries)

CONSTRUYENDO PUENTES EN GASTROENTEROLOGÍA

THANK YOU VERY MUCH



Catholic University Hospital



Red de Salud
UC • **CHRISTUS** 

Engineer Mr. Francisco Schmidt
Andrés Donoso Durante M.D.

