

TELEMEDICINE

Telemedicine is the use of telecommunication and information technologies to provide clinical health care at a distance.



Basic Requirements for Telemedicine



- SOFTWARE



- **HARDWARE**



HD Web Cam



Sound Station




Telecon Equipment Appliance

**HARDWARE
AND
SOFTWARE INTEGRATION**


OT 7


Inputs / Sources

 Image 1 HD

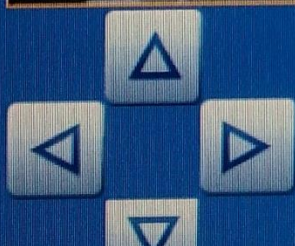
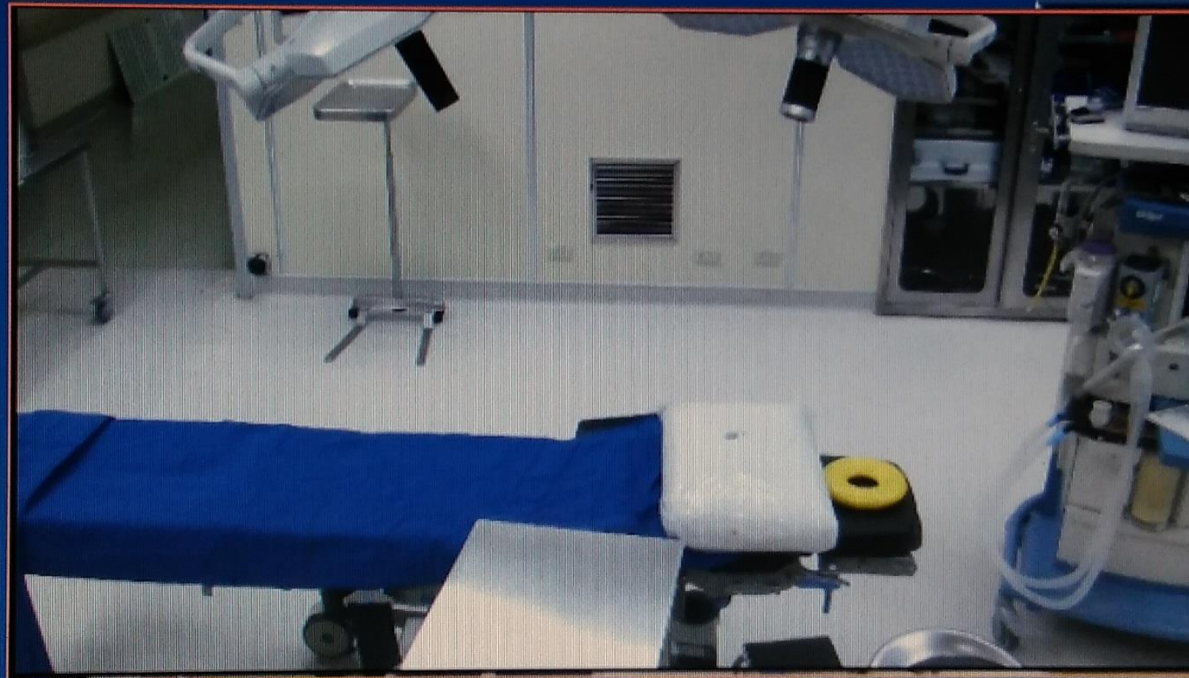
 Surgical Cam

 Room Cam

 Multiinput HD

 Multiinput SD


 AIDA



OT 7

Inputs / Sources

 Image 1 HD

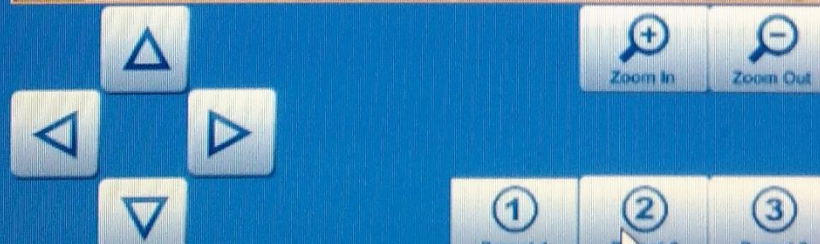
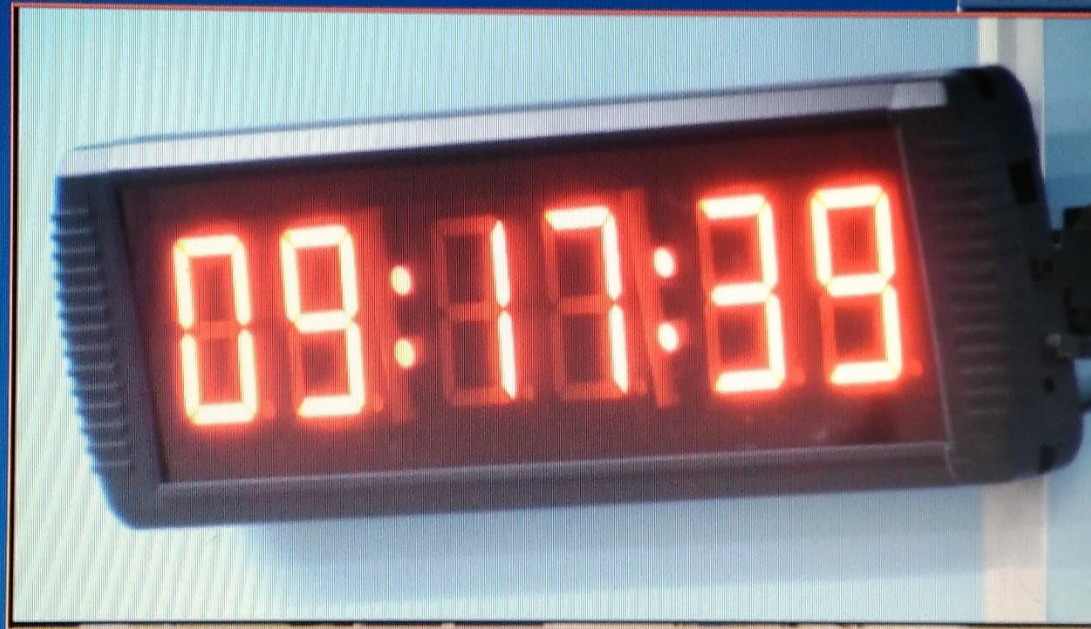
 Surgical Cam

 Room Cam

 Multiinput HD

 Multiinput SD

 AIDA

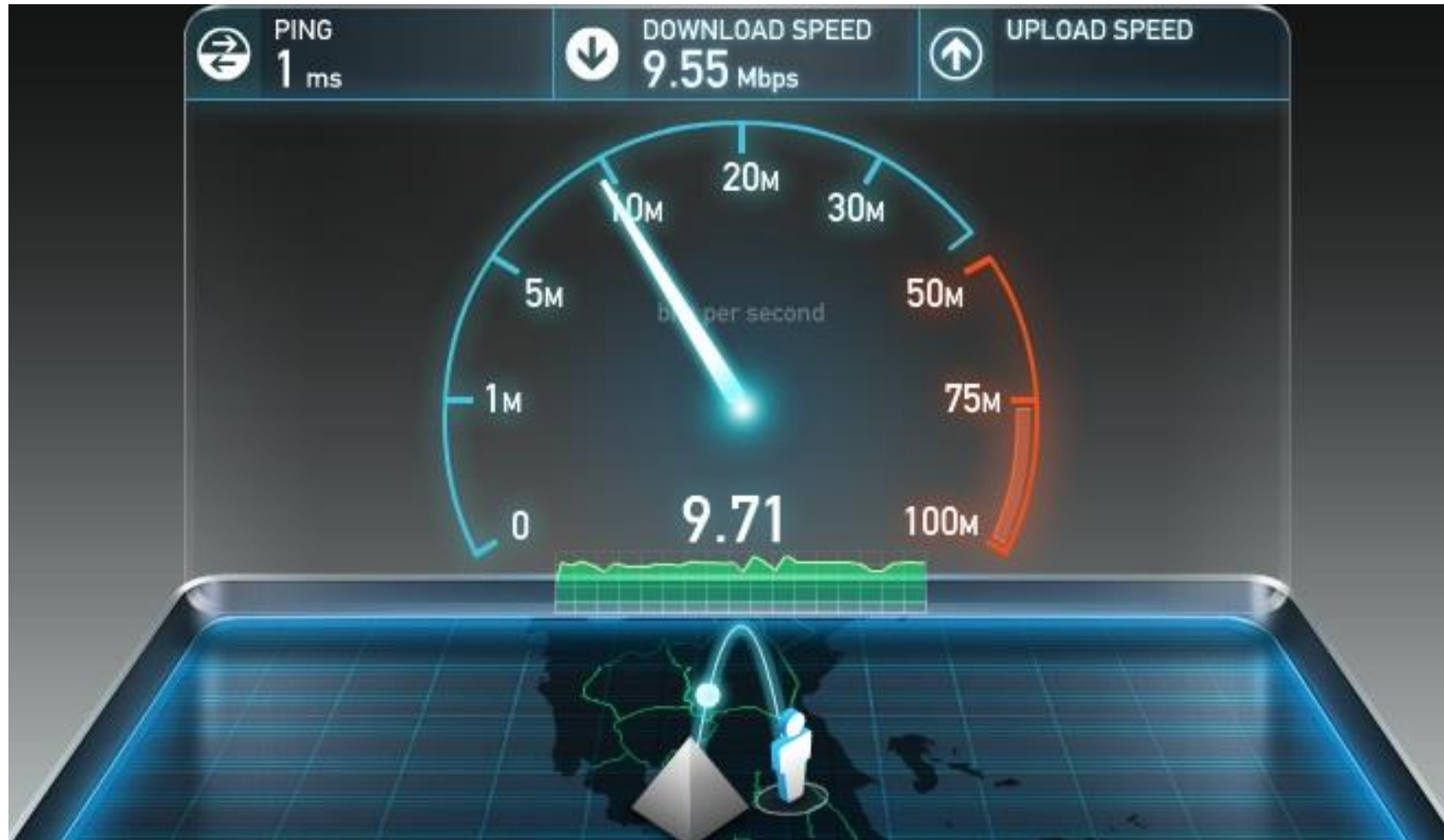








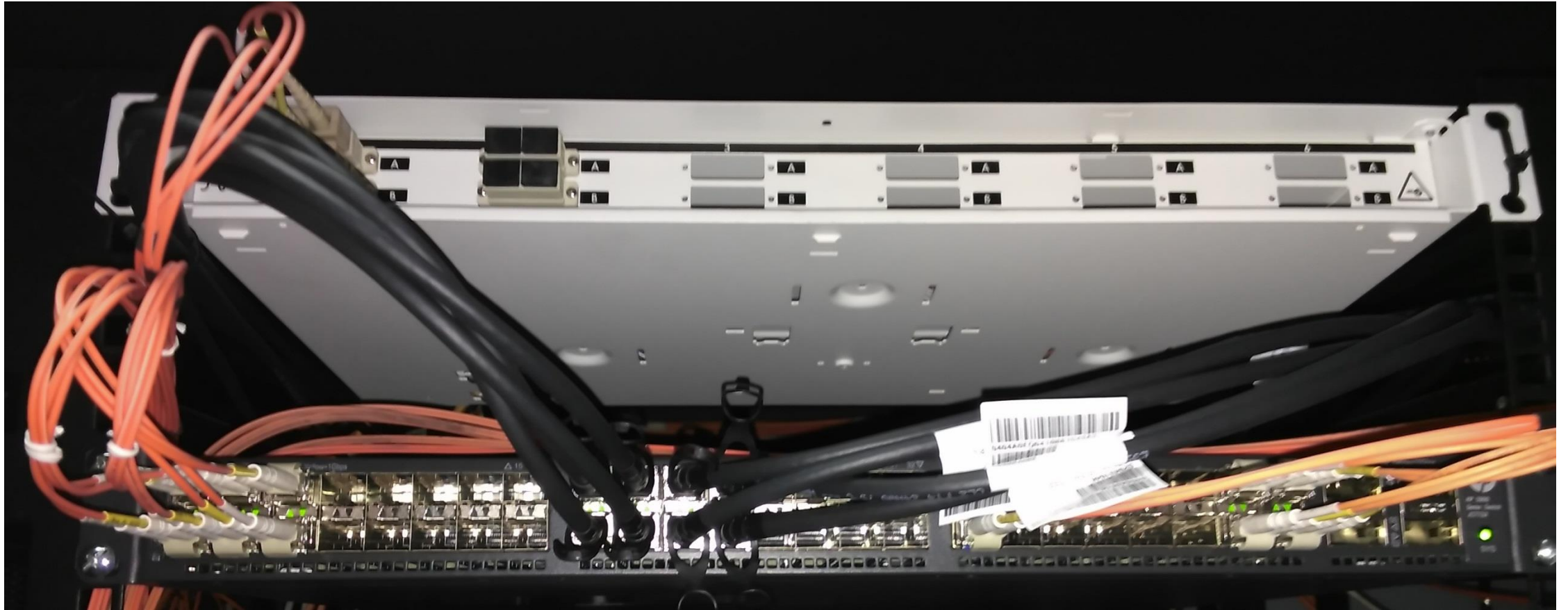
- INTERNET



- **Manage and Good Network Infrastructure**



Next Generation Firewall



10G Fiber Backbones

- Precision Air-Conditioning Unit (PACU)
- Fire Suppression System
- 20 KVA Online UPS



-End of the Slide -

*Thank
you*

