



**Dr. MOEWARDI**  
Rumah Sakit Umum Daerah

# HOSPITAL INTRODUCTION : CLINICS & TECHNOLOGY Dr. MOEWARDI GENERAL HOSPITAL

Dr. Triyanta Yuli Pramana SpPD-KGEH  
Poggy Indra Aditya SKom.



The Indonesian Society for  
Digestive Endoscopy (ISDE)



Universitas Indonesia



Cipto Mangunkusumo National  
General Hospital Jakarta



Telemedicine Development  
Center of Asia (TEMDEC)





RSDM

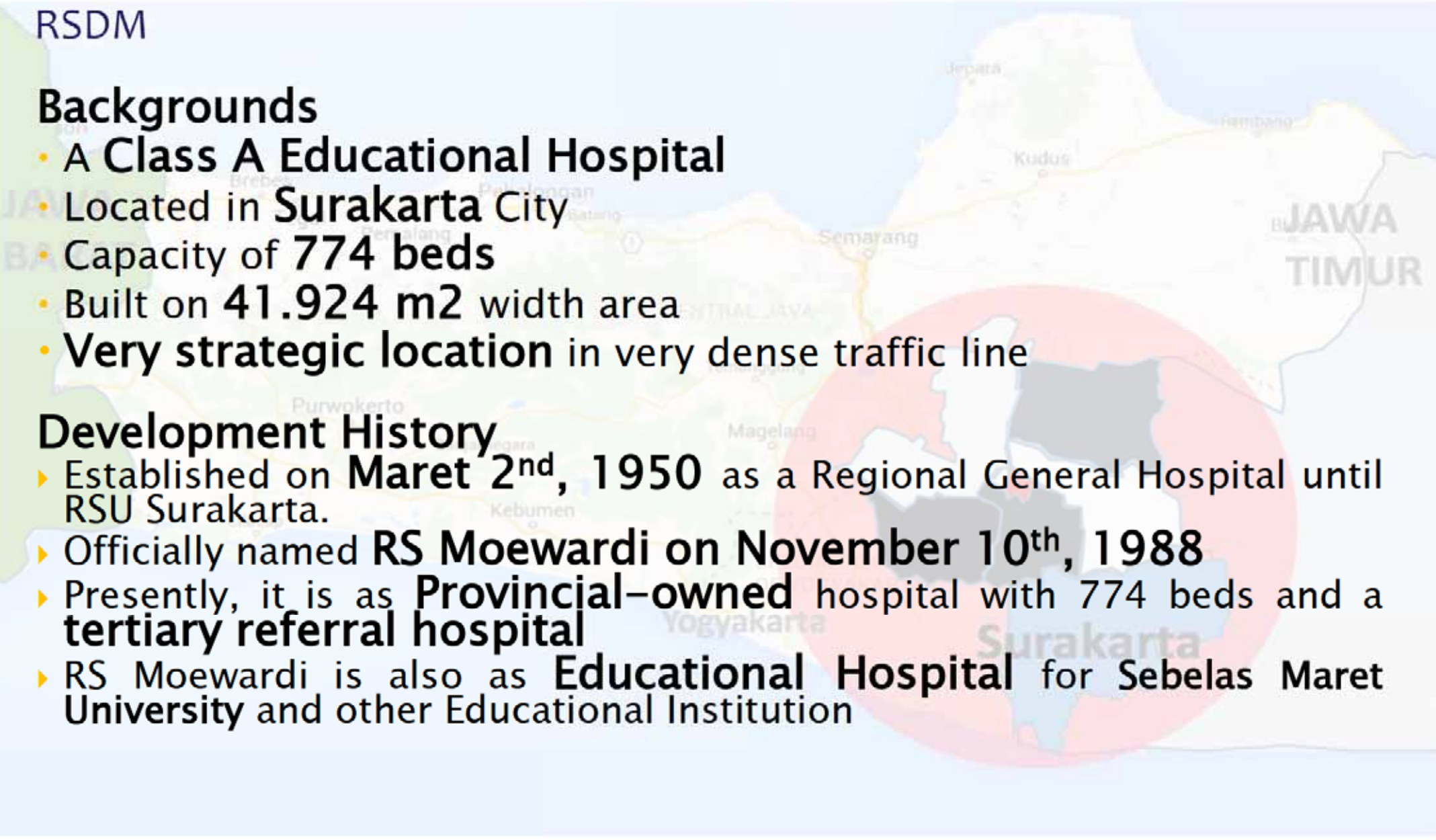
## Dr. MOEWARDI GENERAL HOSPITAL PROFILE

### Backgrounds

- A **Class A Educational Hospital**
- Located in **Surakarta City**
- Capacity of **774 beds**
- Built on **41.924 m<sup>2</sup>** width area
- **Very strategic location** in very dense traffic line

### Development History

- ▶ Established on **Maret 2<sup>nd</sup>, 1950** as a Regional General Hospital until RSU Surakarta.
- ▶ Officially named **RS Moewardi on November 10<sup>th</sup>, 1988**
- ▶ Presently, it is as **Provincial-owned** hospital with 774 beds and a **tertiary referral hospital**
- ▶ RS Moewardi is also as **Educational Hospital** for **Sebelas Maret University** and other Educational Institution



# Introduction of endoscopy profiles

- ▶ Aster Building, 2<sup>nd</sup> Floor, Dr. Moewardi General Hospital
- ▶ Human Resource (clinician)
  - 3 Doctor
  - 4 Nurse
- ▶ Main or flagship services
  - **Endoskopi Diagnostik** : EGD + biopsy , Colonoscopy + biopsy, Kapsul Endoskopi
  - **Endoskopi Therapeutik** : Sclerotherapy Varises Esophagus (STE), Ligasi Varises Esophagus (LVE), Histoacril Injection, Hot Biopsy, Polipectomy, *Esophageal Dilatation, ERCP*, Evakuasi Corpal, Sclerotherapi Hemorroid, Ligasi hemorroid



# Medical needs for telemedicine

## ▶ Existing telemedicine set-up and activities

### ◦ On Gastroenterology Division :

- 1 unit Light Source Olympus Evis Exera II 180 ( 2 gastroscopie & 2 adult colonoscope),
- 1 unit electro surgery/cauter psd 30 (olympus)
- 1 Duodenoscope olympus
- 1 unit PC dekstop computer, monitor & printer
- Manual Endoscope Repressor
- 2 unit Bed Side monitor
- 2 buah brancard sbg meja tindakan



## ▶ Future plans

- ▶ Expecting fields other than endoscopy/surgery, such as infection, dermatology, etc.

# Hospital Telemedicine resource –Key person



Doctor  
Dr. Triyanta Yuli Pramana  
Head of Sub Gastroentero  
Hepatologi  
Dr. Moewardi General Hospital



Coordinator  
Dr. Satriyo Budi Susilo  
Head of IT  
Dr. Moewardi General  
Hospital



Engineer  
Poggy Indra Aditya  
IT Staff  
Dr. Moewardi General  
Hospital

# Hospital Telemedicine resource

## ▶ Internet

- Commercial (Telkom Speedy Gold)
- Bandwidth all total 50 Mbps
- Routing with Mikrotik
- Security : Firewalls, Anti Virus

## ▶ Equipment

- Teleconference room -> we do not have yet
- Teleconference devices
  - WebCam HD (Logitech)
  - Portable Sound System Set

## ▶ Experience

- Don't have any experience in telemedicine, only experience on teleconference (mostly use webinar app)





# Hospital Telemedicine resource

- **Current problems**

- Because there is no sustainable telemedicine event, the hospital management not supporting facilities and infrastructure needs telemedicine
- Some Group Medical Unit still prefer to carry a teleconference / telemedicine independently without involving the hospital IT (usually due to bureaucracy)

- **Expectation**

- Learn more technically about telemedicine
  - Asking purchasing budget telemedicine infrastructure to the management of the hospital
  - Next year we have a target to create a computer lab that can be enabled as well as a teleconference
  - socializing telemedicine to the medical unit of the group, so that when there is an event, the hospital IT could be involved so that infrastructure teleconferencing / telemedicine more in support of management.
- 