

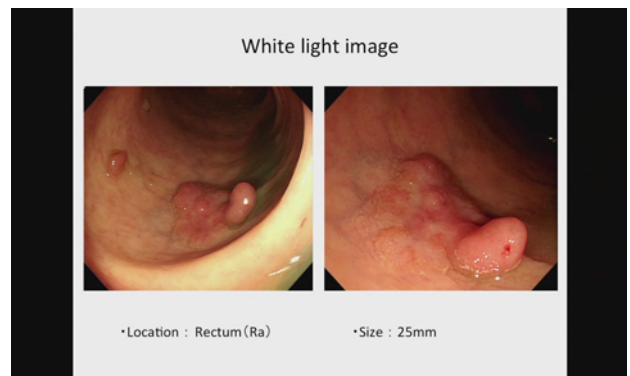
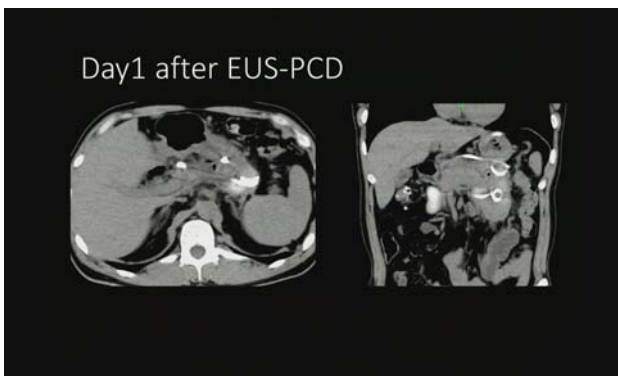
#696 Teleconference between Kobe University and St. Luke's Medical Center Global City

2017.01.17

<p><b>【Event】</b> Teleconference between Kobe University and St. Luke's Medical Center Global City</p>	<p><b>【Comments】</b> Endoscopic training program has started from last year between Kobe Univ. and St. Luke's Medical Center. A Kobe doctor stays in Manila and teaches endoscopic procedure at St. Luke's now. Kobe doctors presented an early colon cancer and a pancreatic pseudocyst case, and St. Luke's presented a large duodenal adenoma case. Some surgeons joined in the conference and they suggested surgical opinion for the procedure. We could exchange our opinions frankly by the teleconference.</p>
<p><b>【Date】</b> 2016.08.26</p>	
<p><b>【Venue】</b> Kobe University (Japan), St. Luke's Medical Center Global City (Philippines), Kyushu University Hospital (Japan)</p>	



<p>Teleconference view at Kobe University.</p>	<p>Teleconference view at St. Luke's Medical Center.</p>
<p>Picture taken at: Kyushu University Hospital</p>	<p>Picture taken at: St. Luke's Medical Center</p>



<p>A presented image of CT.</p>	<p>A presented image of endoscopy.</p>
<p>Picture taken at: Kyushu University Hospital</p>	<p>Picture taken at: Kyushu University Hospital</p>



<p>Monitor shows 3 connected sites.</p>	<p>Explanation of operation with medical appliance.</p>
<p>Picture taken at: Kyushu University Hospital</p>	<p>Picture taken at: Kyushu University Hospital</p>